

Missoula Interagency Dispatch Zone Run Card Response Aid 2024



River Road East Fire, Plains-Thompson Falls Range District, Lolo National Forest, August 18, 2023



THIS PAGE INTENTIONALLY LEFT BLANK

THIS PAGE INTENTIONALLY LEFT BLANK

Table of Contents

Run Card Overview	7
Limited Response Plan Protocol.....	7
Run Card Daily Responsibilities.....	8
MDC Responsibilities.....	8
Duty Officer Responsibilities.....	8
Resources Responsibilities	8
FDRAs, ERC, BI, and RL Tables.....	9
Run Cards	11
West Zone – Plains & Thompson Falls Ranger District (D5).....	13
5-PLNO D5 – Plains North.....	14
5-PLNE D5 – Plains Northeast.....	15
5-PLSE D5 – Plains Southeast.....	16
5-PLSW D5 – Plains Southwest.....	17
5-PLWE D5 – Plains West.....	18
5-TFLN D5 – Thompson Falls North.....	19
5-TFLC D5 – Thompson Falls Central.....	20
5-TFLS D5 – Thompson Falls South.....	21
West Zone – Superior Ranger District (D7).....	23
7-WENO D7 – West End North.....	24
7-STRE D7 – Saint Regis Area WUI	25
7-DBGA D7 – West End WUI (Saltese / Haugan / De Borgia)	26
7-WESO D7 – West End South.....	27
7-EESO D7 – East End South	28
7-SUPR D7 – Superior Area WUI	29
7-EENO D7 – East End North	30
Central Zone – Ninemile Ranger District (D4).....	31
4-9MIL D4 – 9Mile Mountains.....	32
4-9MVY D4 – 9Mile Valley.....	33
4-STRK D4 – Stark Mountain	34
4-NFSH D4 – North Fish Creek	35
4-GRBN D4 – Great Burn.....	36
4-SFSH D4 – South Fish Creek.....	37
4-BRDT D4 – Burdette	38
4-WPTY D4 – West Petty Creek	39
4-EPTY D4 – East Petty Creek	40
4-ALBR D4 – Albert Point.....	41
4-WSSR D4 – West Southside	42
Central Zone – Missoula Ranger District (D3).....	43
3-WES1 D3 – Blue Mountain	44
3-WES2 D3 – Lolo Creek North.....	45
3-WES3 D3 – Lolo Creek South.....	46
3-WES4 D3 – Graves Creek.....	47
3-SFLL D3 – South Fork Lolo Creek.....	48
3-NOR1 D3 – Butler-Marshall	49
3-NOR2 D3 – Rattlesnake Wilderness	50
3-SOU1 D3 – Pattee Canyon.....	51
3-SOU2 D3 – Miller-Swartz.....	52

3-SOU3	D3 – Beavertail South.....	53
3-SOU4	D3 – Welcome Creek Wilderness.....	54
3-SOU5	D3 – Rock Creek West.....	55
Central Zone – Missoula Unit (MSO)	57
M-PTY	MSO – Petty.....	58
M-H12	MSO – HWY 12.....	59
M-SSR	MSO – South Side.....	60
M-WDH	MSO – Wildhorse.....	61
M-FTF	MSO – Frenchtown Face.....	62
M-WML	MSO – West Mill Creek.....	63
M-MLC	MSO – Mill Creek.....	64
M-MNS	MSO – Missoula North Side.....	65
M-SOU	MSO – South (Hayes Creek).....	66
M-MLR	MSO – Miller Creek.....	67
M-BIT	MSO – Bitterroot.....	68
M-CFE	MSO – Clark Fork East.....	69
M-200	MSO – HWY 200.....	70
M-UGC	MSO – Upper Gold Creek.....	71
East Zone – Clearwater Unit (CLW)	73
C-WEST	CLW - West.....	74
C-STH	CLW - South.....	75
C-EAST	CLW - East.....	76
C-NRTH	CLW - North.....	77
East Zone – Seeley Ranger District (D6)	79
6-SLNO	D6 – Seeley North.....	80
6-SLSF	D6 – Swan Face.....	81
6-SLCN	D6 – Seeley Central.....	82
6-SLSG	D6 – Scape Goat.....	83
6-SLEA	D6 – Seeley East.....	84
APPENDICIES	85
Appendix A – Terminology.....		87
Appendix B - Call Signs.....		88
Appendix C – Resource Statusing.....		89
Appendix D – Initial Attack Fire Size Up Form.....		90
Appendix E – Dispatch Fire Tone Out Script for Run Card Response.....		91
Appendix F – Dispatch Fire Tone Out Script for Duty Officer Notification Response.....		92

THIS PAGE INTENTIONALLY LEFT BLANK

Run Card Overview

Missoula Interagency Dispatch Zone Run Cards have been established as required by the Northern Rockies Southwest Zone Fire Danger Operating Plan (FDOP). Please refer to the current FDOP and its sub-documents for additional information on their purpose, terminology, and policy.

The Interagency Run Cards are developed by Fire and Dispatch Management to identify the number and type of resources initially dispatched to a reported wildland fire based on current fire danger criteria, fire management objectives, and resource availability. The Run Cards will be used when a wildfire is reported that falls within the effective dates, operational hours, and does not meet the discretionary smoke report criteria.

Effective Dates: May 1 to September 30

Operational Hours: 5-day staffing, 10:00-16:30; 7-day staffing, 10:00-18:00

When using Run Cards, Missoula Interagency Dispatch Center (MDC) will dispatch the closest available resource(s), regardless of agency, as dictated by the appropriate Run Card. Outside of these conditions, notification of smoke reports will be made from MDC directly to the appropriate Duty Officer, who will determine the appropriate response.

During periods of large or multiple fire activity or when there are not enough resources to fulfill the Run Cards, the appropriate Duty Officers may initiate the Limited Response Plan. Duty Officers or delegated personnel will remain available to MDC to determine incident prioritization and response.

Duty Officers will retain the discretion to set their unit to a different response level than indicated for any given fire day, or to modify the response level for any given incident. When an NWCG qualified Incident Commander is on scene of the fire, they may adjust the pre-established Run Card response as well.

Limited Response Plan Protocol

A Duty Officer for a given district or unit can initiate the Limited Response Plan for any given reason. The most common are:

- A predicted event that could result in multiple starts
- A widespread lightning activity resulting in numerous starts
- Inability to fulfill pre-established Run Cards due to staffing

Individual districts and units have discretion of entering Limited Response and will only apply to the individual district or unit. During the Limited Response Plan, the appropriate Duty Officer(s) or designated personnel will provide guidance to and coordinate with MDC for initial response to new starts, as well as prioritization of incidents. A Local Multi-Agency Coordinating (LMAC) Group call may be initiated.

If the appropriate Duty Officer is unable to provide coordinated direction, the MDC Floor Supervisor is authorized to determine the fire priorities based on given information and make modifications to the established Run Card response during multiple start events.

Run Card Daily Responsibilities

Below is a brief overview of some of the daily procedures expected of Missoula Dispatch and fire resources to facilitate proper Run Card response and functionality. These are not all encompassing but meant to provide examples on some inputs needed for the successful implementation of Run Cards.

MDC Responsibilities

- MDC uses WildCAD, a computer assisted dispatching application specific to the wildland fire industry, to dispatch and track resources. For Run Cards to be functional within WildCAD, maps with Response Areas and Dispatch Locations must be updated yearly, if changes occur. WildCAD then utilizes these as reference points to determine the applicable Run Card for and closest resources to a reported incident.
- MDC will reference Daily Resource Status Page and put all identified resources available quarters in WildCAD by 1000, unless otherwise statused via radio prior to 1000. MDC will call the appropriate Duty Officer if the Resource Status Page has not been updated by 1000 daily.
- Set Dispatch Response Levels in WildCAD based on the afternoon observed indices.
See chart on page 11 for how Dispatch Response Levels are determined.
 - Designated Dispatch Response Levels (Low, Moderate, High) determine what portion of the Run Card to “read” and the number and type of resources in the pre-established response.
- Status resources as they update dispatch with changes to locations and status.
- Dispatch resources to reported wildland fires using the appropriate tone out script.
See Appendix E for MDC Run Card Script for Run Card Response-
See Appendix F for MDC Run Card Script for Duty Officer Notification Response

Duty Officer Responsibilities

- Update Daily Resource Status Summary Page, by 1000, with all fire resources available for the day as well as any out of area resources in zone on assignment.
https://gacc.nifc.gov/nrcc/dc/mtmdc/res_page/login.php (Password: mdcrsp)
- Communicate and coordinate with MDC, especially when zone is in Limited Response.

Resources Responsibilities

- Call into service referencing call sign, appropriate Dispatch Location, and specific location in service to.
 - MDC will status resources in WildCAD by Call Sign to the Dispatch Location designated while also recording specific location information provided.
See Appendix B for call sign protocols
 - When a fire is reported, MDC will look for closest available resources based on their Dispatch Location. If resources do not reference a dispatch location when calling into service, the dispatcher will assume resources’ location, thereby creating a potential for that resource to be passed by for another resource who is “correctly” statused and shows closer to incident.
- Update MDC when changing locations
- Update MDC when status changes
See Appendix C for resource statusing protocols
- Provide acknowledgement of fire dispatch/tone out upon dispatch checkback
- When on scene at incident, provide dispatch with a brief arrival report while preparing a full size up.
See Appendix D for example of arrival report

FDRAs, ERC, BI, and RL Tables

Fire Danger Rating Areas:

FDRAs	Special Interest Group (SIG) Name	Component Weather Stations
Lolo DNRC East	LDE	Ninemile, Seeley Lake, Blue Mountain
Lolo DNRC West	LDW	St. Regis, Ninemile, Plains
CSKT East	CE	Ronan
CSKT West	CW	Plains, Ronan
Bitterroot Low	BRL	Smith Creek, Sula, West Fork, Little Rock Creek
Bitterroot High	BRH	Gird, Teepee Point, Deer Point, Hells Half

ERC Decision Threshold Ranges in all FDRAs:

Decision Threshold Ranges	Lolo DNRC East	Lolo DNRC West	CSKT East	CSKT West	Bitterroot Low	Bitterroot High
Low & PL 1 0% - 39%	0-20.9	0-23.9	0-20.9	0-22.9	0-19.9	0-15.9
Moderate & PL 2 40% - 79%	21-39.9	24-40.9	21-32.9	23-37.9	20-43.9	16-40.9
High & PL 3 80% - 89%	40-45.9	41-47.9	33-37.9	38-43.9	44-48.9	41-46.9
Very High & PL 4 90% - 96%	46-50.9	48-53.9	38-42.9	44-49.9	49-54.9	47-52.9
Extreme & PL 5 >97%	51+	54+	43+	50+	55+	53+

BI Decision Threshold Ranges in all FDRAs:

Decision Threshold Ranges	Lolo DNRC East	Lolo DNRC West	CSKT East	CSKT West	Bitterroot Low	Bitterroot High
Low	0-28.9	0-21.9	0-24.9	0-20.9	0-32.9	0-30.9
Moderate	29-35.9	22-43.9	25-32.9	21-40.9	33-46.9	31-41.9
High >97%	36+	44+	33+	41+	47+	72+

Dispatch Response Level Matrix:

BI Class	H	Low	Low	Mod	High	High+
	M	Low	Low	Mod	Mod	High
L	Low	Low	Low	Mod	Mod	Mod
		1	2	3	4	5
		ERC Class				

For more detailed information, please reference the Northern Rockies Southwest Zone Interagency Fire Danger Operating Plan

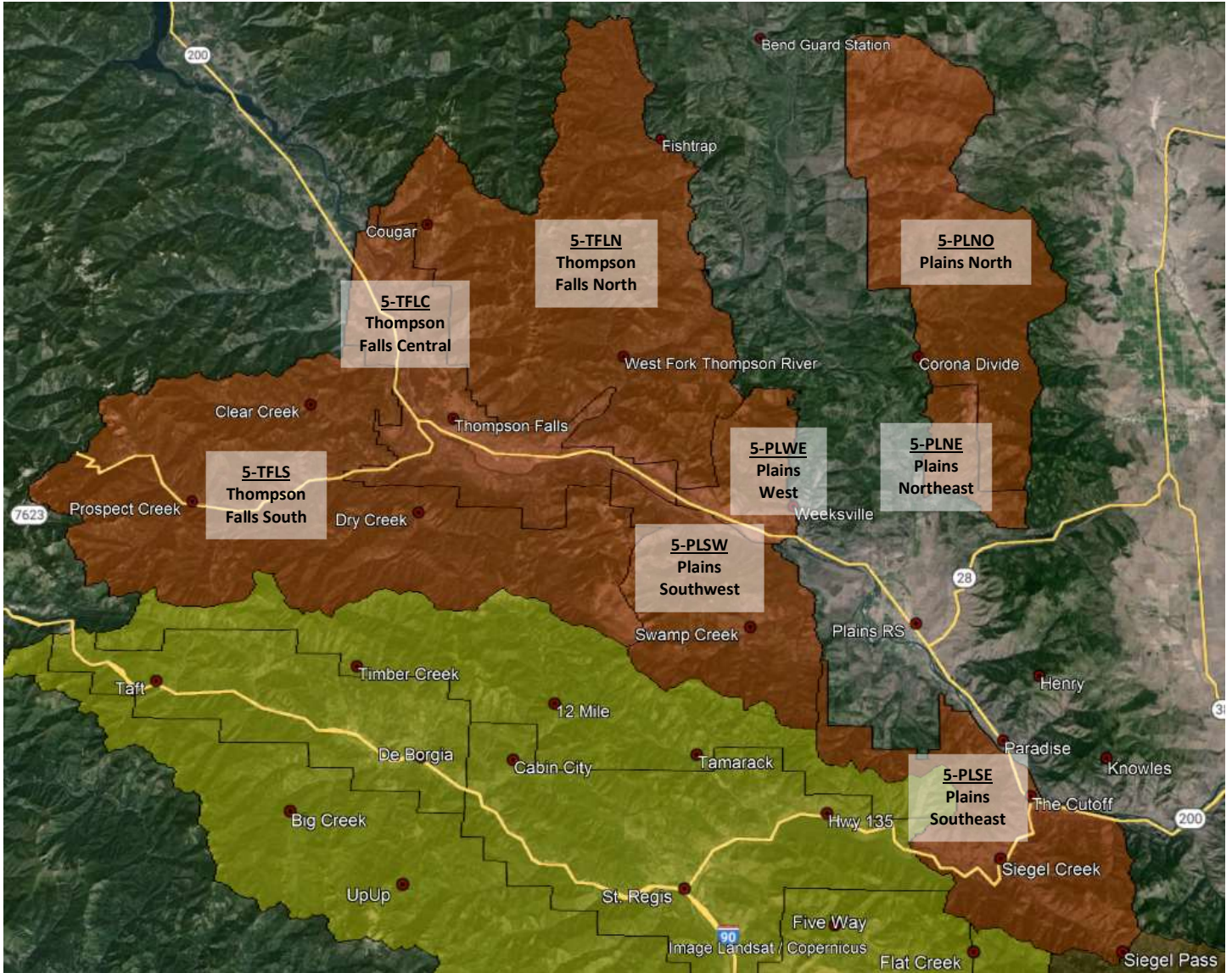
THIS PAGE INTENTIONALLY LEFT BLANK

Run Cards

THIS PAGE INTENTIONALLY LEFT BLANK

West Zone – Plains & Thompson Falls Ranger District (D5)

Lolo National Forest



5-PLNO D5 – Plains North

AGENCY	UNIT	DISPATCH BLOCK #	DISPATCH BLOCK NAME	FDRA	CENTER POINT
USFS	D5	5-PLNO	Plains North	Lolo DNRC West	Corona Divide N47° 38.967' x W114° 52.476'

DISPATCH RESPONSE LEVEL	LOW	MODERATE	HIGH
FIRE RESPONSE	Notify Duty Officer	Notify Duty Officer	Notify Duty Officer Prepare Kneeboard for Aircraft
<i>Fire Response to Consider</i>	<i>Notify Duty Officer</i>	<i>1 IA Module</i>	<i>1 Engine 1 IA Module</i>

RADIO GROUP	COMMAND	TAC	AIR-TO-AIR Zone	AIR-TO-GROUND Protection
West Zone	FS West Direct -OR- FS Richards	LNF TAC 2	A/A 1: 119.3500	A/G 05: 166.7500

SHARED BOUNDARY:

- DNRC Plains Unit (PLN)
- Confederated Salish & Kootenai Tribes (CSKT - Flathead Agency)

MDC NOTIFICATIONS:

- District Duty Officer
- Sanders County 911
- Determine if Sanders County 911 has dispatched county fire resources
- Notify responding resources of county fire resource status
- If smoke report is within 5 nautical miles of DNRC Plains Unit, notify Kalispell Interagency Dispatch Center
- If smoke report is within 1 nautical mile of CSKT protection, notify Ronan Dispatch Center

IF AIRCRAFT IS ORDERED:

- Ensure helicopter is or can be configured for water drops

KNOWN HAZARDS:

- Unknown

DUTY OFFICER CONSIDERATIONS:

- Determine if additional resources are necessary
- Make standard notifications
- If it is a human start, order an INV. If fire is human caused with criminal potential, order a USFS LEO

5-PLNE D5 – Plains Northeast

AGENCY	UNIT	DISPATCH BLOCK #	DISPATCH BLOCK NAME	FDRA	CENTER POINT
USFS	D5	5-PLNE	Plains Northeast	Lolo DNRC West	Blanchard Corner N47° 33.394' x W114° 52.304'

DISPATCH RESPONSE LEVEL	LOW	MODERATE	HIGH
FIRE RESPONSE	Notify Duty Officer	Notify Duty Officer	Notify Duty Officer Prepare Kneeboard for Aircraft
<i>Fire Response to Consider</i>	<i>Notify Duty Officer</i>	<i>1 IA Module</i>	<i>1 Engine 1 IA Module</i>

RADIO GROUP	COMMAND	TAC	AIR-TO-AIR Zone	AIR-TO-GROUND Protection
West Zone	FS West Direct	LNF TAC 2	A/A 1: 119.3500	A/G 05: 166.7500

SHARED BOUNDARY:

- DNRC Plains Unit (PLN)
- Confederated Salish & Kootenai Tribes (CSKT - Flathead Agency)

MDC NOTIFICATIONS:

- District Duty Officer
- Sanders County 911
- Determine if Sanders County 911 has dispatched county fire resources
- Notify responding resources of county fire resource status
- If smoke report is within 5 nautical miles of DNRC Plains Unit, notify Kalispell Interagency Dispatch Center
- If smoke report is within 1 nautical mile of CSKT protection, notify Ronan Dispatch

IF AIRCRAFT IS ORDERED:

- Ensure helicopter is or can be configured for water drops

KNOWN HAZARDS:

- BPA 500 kV power lines.

DUTY OFFICER CONSIDERATIONS:

- Determine if additional resources are necessary
- Make standard notifications
- If it is a human start, order an INVF. If fire is human caused with criminal potential, order a USFS LEO

5-PLSE D5 – Plains Southeast

AGENCY	UNIT	DISPATCH BLOCK #	DISPATCH BLOCK NAME	FDRA	CENTER POINT
USFS	D5	5-PLSE	Plains Southeast	Lolo DNRC West	Junction of Hwy 135 & 200 N47° 21.3' x W114° 46.7'

DISPATCH RESPONSE LEVEL	LOW	MODERATE	HIGH
FIRE RESPONSE	Notify Duty Officer	Notify Duty Officer	Notify Duty Officer Prepare Kneeboard for Aircraft
<i>Fire Response to Consider</i>	<i>Notify Duty Officer</i>	<i>1 IA Module</i>	<i>1 Engine 1 IA Module</i>

RADIO GROUP	COMMAND	TAC	AIR-TO-AIR Zone	AIR-TO-GROUND Protection
West Zone	FS West Direct – OR- FS Keystone	LNF TAC 2	A/A 1: 119.3500	A/G 05: 166.7500

SHARED BOUNDARY:

- Superior Ranger District (D7)
- Ninemile Ranger District (D4)
- DNRC Plains Unit
- Confederated Salish & Kootenai Tribes (CSKT - Flathead Agency)

MDC NOTIFICATIONS:

- District Duty Officer
- Sanders County 911
- Determine if Sanders County 911 has dispatched county fire resources
- Notify responding resources of county fire resource status
- If smoke report is within 1 nautical mile of Superior Ranger District (D7), notify D7 Duty Officer
- If smoke report is within 1 nautical mile of Ninemile Ranger District (D4), notify D4 Duty Officer
- If smoke report is within 5 nautical miles of DNRC Plains Unit, notify Kalispell Interagency Dispatch Center
- If smoke report is within 1 nautical mile of CSKT protection, notify Ronan Dispatch

IF AIRCRAFT IS ORDERED:

- Ensure helicopter is or can be configured for water drops

KNOWN HAZARDS:

- BPA 500 kV power lines.

DUTY OFFICER CONSIDERATIONS:

- Determine if additional resources are necessary.
- Make standard notifications.
- If it is a human start, order an INVF. If fire is human caused with criminal potential, order a USFS LEO.

5-PLSW D5 – Plains Southwest

AGENCY	UNIT	DISPATCH BLOCK #	DISPATCH BLOCK NAME	FDRA	CENTER POINT
USFS	D5	5-PLSW	Plains Southwest	Lolo DNRC West	Swamp Creek N47° 27.7' x W115° 2.5'

DISPATCH RESPONSE LEVEL	LOW	MODERATE	HIGH
FIRE RESPONSE	Notify Duty Officer	Notify Duty Officer	Notify Duty Officer Prepare Kneeboard for Aircraft
<i>Fire Response to Consider</i>	<i>Notify Duty Officer</i>	<i>1 IA Module</i>	<i>1 Engine 1 IA Module</i>

RADIO GROUP	COMMAND	TAC	AIR-TO-AIR Zone	AIR-TO-GROUND Protection
West Zone	FS West Direct -OR- FS Eddy	LNF TAC 2	A/A 1: 119.3500	A/G 05: 166.7500

SHARED BOUNDARY:

- Superior Ranger District (D7)
- DNRC Plains Unit

MDC NOTIFICATIONS:

- District Duty Officer
- Sanders County 911
- Determine if Sanders County 911 has dispatched county fire resources
- Notify responding resources of county fire resource status
- If smoke report is within 1 nautical mile of Superior Ranger District (D7), notify D7 Duty Officer
- If smoke report is within 5 nautical miles of DNRC Plains Unit, notify Kalispell Interagency Dispatch Center

IF AIRCRAFT IS ORDERED:

- Ensure helicopter is or can be configured for water drops

KNOWN HAZARDS:

- BPA 500 kV power lines.

DUTY OFFICER CONSIDERATIONS:

- Determine if additional resources are necessary.
- Make standard notifications.
- If it is a human start, order an INVF. If fire is human caused with criminal potential, order a USFS LEO.

5-PLWE D5 – Plains West

AGENCY	UNIT	DISPATCH BLOCK #	DISPATCH BLOCK NAME	FDRA	CENTER POINT
USFS	D5	5-PLWE	Plains West	Lolo DNRC West	5587 & 887 Road Junction N47° 34.1' x W115° 0.3'

DISPATCH RESPONSE LEVEL	LOW	MODERATE	HIGH
FIRE RESPONSE	Notify Duty Officer	Notify Duty Officer	Notify Duty Officer Prepare Kneeboard for Aircraft
<i>Fire Response to Consider</i>	<i>Notify Duty Officer</i>	<i>1 IA Module</i>	<i>1 Engine 1 IA Module</i>

RADIO GROUP	COMMAND	TAC	AIR-TO-AIR Zone	AIR-TO-GROUND Protection
West Zone	FS West Direct – OR- FS Eddy	LNF TAC 2	A/A 1: 119.3500	A/G 05: 166.7500

SHARED BOUNDARY:

- DNRC Plains Unit

MDC NOTIFICATIONS:

- District Duty Officer
- Sanders County 911
- Determine if Sanders County 911 has dispatched county fire resources
- Notify responding resources of county fire resource status
- If smoke report is within 5 nautical miles of DNRC Plains Unit, notify Kalispell Interagency Dispatch Center

IF AIRCRAFT IS ORDERED:

- Ensure helicopter is or can be configured for water drops

KNOWN HAZARDS:

- BPA 500 kV power lines.

DUTY OFFICER CONSIDERATIONS:

- Determine if additional resources are necessary.
- Make standard notifications.
- If it is a human start, order an INV. If fire is human caused with criminal potential, order a USFS LEO.

5-TFLN D5 – Thompson Falls North

AGENCY	UNIT	DISPATCH BLOCK #	DISPATCH BLOCK NAME	FDRA	CENTER POINT
USFS	D5	5-TFLN	Thompson Falls North	Lolo DNRC West	West Fork Thompson River N47° 39.0' x W115° 10.4'

DISPATCH RESPONSE LEVEL	LOW	MODERATE	HIGH
FIRE RESPONSE	Notify Duty Officer	Notify Duty Officer	Notify Duty Officer Prepare Kneeboard for Aircraft
<i>Fire Response to Consider</i>	<i>Notify Duty Officer</i>	<i>1 IA Module</i>	<i>1 Engine 1 IA Module</i>

RADIO GROUP	COMMAND	TAC	AIR-TO-AIR Zone	AIR-TO-GROUND Protection
West Zone	FS West Direct -OR- Varies, based on location	LNF TAC 2	A/A 1: 119.3500	A/G 05: 166.7500

<p>SHARED BOUNDARY:</p> <ul style="list-style-type: none"> • DNRC Plains Unit • Kootenai Interagency Dispatch
<p>MDC NOTIFICATIONS:</p> <ul style="list-style-type: none"> • District Duty Officer • Sanders County 911 • Determine if Sanders County 911 has dispatched county fire resources • Notify responding resources of county fire resource status • If smoke report is within 5 nautical miles of DNRC Plains Unit, notify Kalispell Interagency Dispatch Center • If smoke report is within 5 nautical miles of Kootenai Interagency Dispatch (KDC) boundary, notify KDC
<p>IF AIRCRAFT IS ORDERED:</p> <ul style="list-style-type: none"> • Ensure helicopter is or can be configured for water drops
<p>KNOWN HAZARDS:</p> <ul style="list-style-type: none"> • Unknown
<p>DUTY OFFICER CONSIDERATIONS:</p> <ul style="list-style-type: none"> • Determine if additional resources are necessary. • Make standard notifications. • If it is a human start, order an INV. If fire is human caused with criminal potential, order a USFS LEO.

5-TFLC D5 – Thompson Falls Central

AGENCY	UNIT	DISPATCH BLOCK #	DISPATCH BLOCK NAME	FDRA	CENTER POINT
USFS	D5	5-TFLC	Thompson Falls Central	Lolo DNRC West	Thompson Falls Work Center N47° 36.2' x W115° 20.6'

DISPATCH RESPONSE LEVEL	LOW	MODERATE	HIGH
FIRE RESPONSE	Notify Duty Officer	Notify Duty Officer	Notify Duty Officer Prepare Kneboard for Aircraft
<i>Fire Response to Consider</i>	<i>Notify Duty Officer</i>	<i>1 IA Module</i>	<i>1 Engine 1 IA Module</i>

RADIO GROUP	COMMAND	TAC	AIR-TO-AIR Zone	AIR-TO-GROUND Protection
West Zone	FS West Direct -OR- FS Eddy	LNF TAC 2	A/A 1: 119.3500	A/G 05: 166.7500

<p>SHARED BOUNDARY:</p> <ul style="list-style-type: none"> Kootenai Interagency Dispatch
<p>MDC NOTIFICATIONS:</p> <ul style="list-style-type: none"> District Duty Officer Sanders County 911 Determine if Sanders County 911 has dispatched county fire resources Notify responding resources of county fire resource status If smoke report is within 5 nautical miles of Kootenai Interagency Dispatch (KDC) boundary, notify KDC
<p>IF AIRCRAFT IS ORDERED:</p> <ul style="list-style-type: none"> Ensure helicopter is or can be configured for water drops
<p>KNOWN HAZARDS:</p> <ul style="list-style-type: none"> BPA 500 kV power lines.
<p>DUTY OFFICER CONSIDERATIONS:</p> <ul style="list-style-type: none"> Determine if additional resources are necessary. Make standard notifications. If it is a human start, order an INV. If fire is human caused with criminal potential, order a USFS LEO.

5-TFLS D5 – Thompson Falls South

AGENCY	UNIT	DISPATCH BLOCK #	DISPATCH BLOCK NAME	FDRA	CENTER POINT
USFS	D5	5-TFLS	Thompson Falls South	Lolo DNRC West	Clear Creek N47° 36.7' x W115° 29.2'

DISPATCH RESPONSE LEVEL	LOW	MODERATE	HIGH
FIRE RESPONSE	Notify Duty Officer	Notify Duty Officer	Notify Duty Officer Prepare Kneeboard for Aircraft
<i>Fire Response to Consider</i>	<i>Notify Duty Officer</i>	<i>1 IA Module</i>	<i>1 Engine 1 IA Module</i>

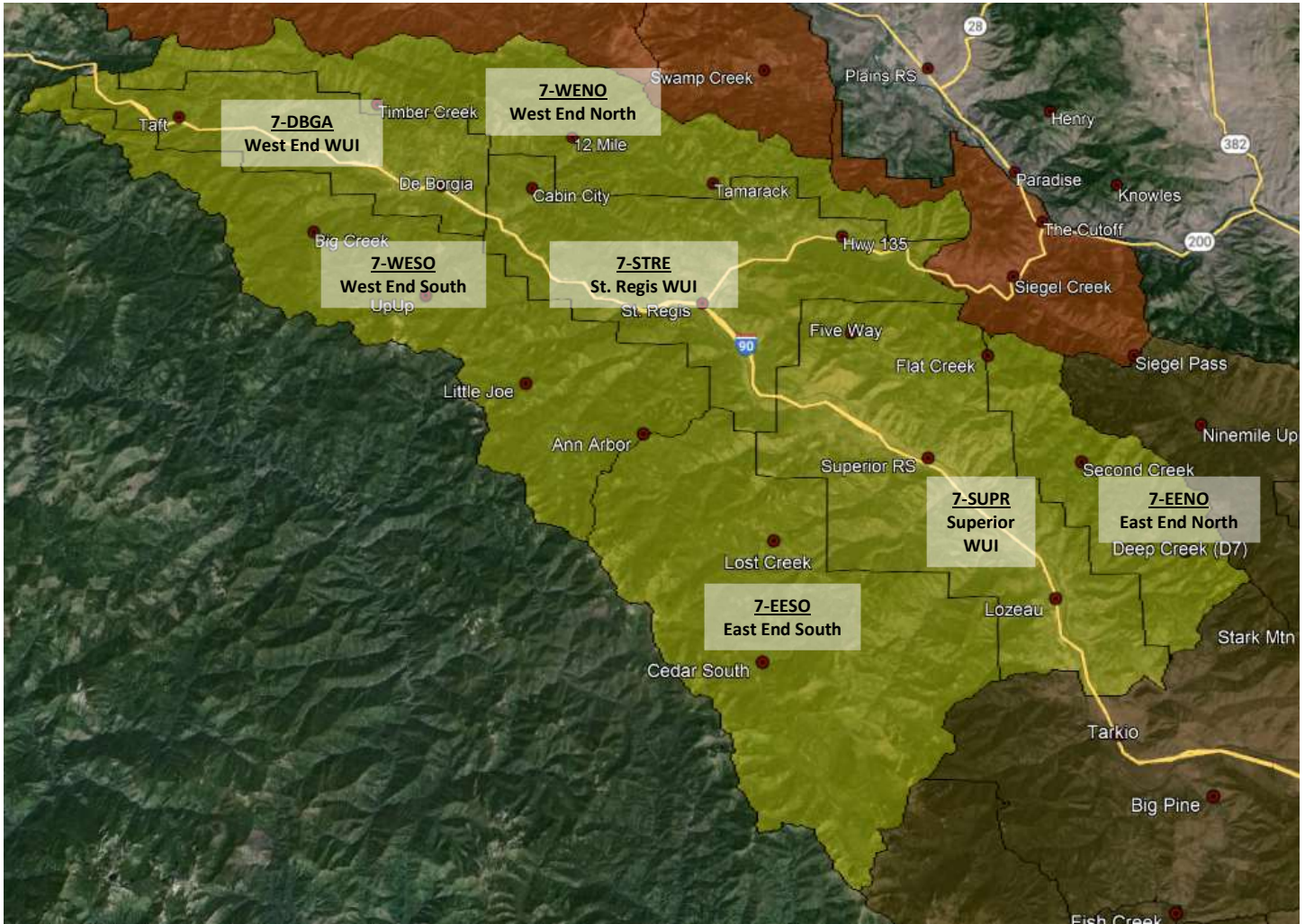
RADIO GROUP	COMMAND	TAC	AIR-TO-AIR Zone	AIR-TO-GROUND Protection
West Zone	FS West Direct	LNF TAC 2	A/A 1: 119.3500	A/G 05: 166.7500

<p>SHARED BOUNDARY:</p> <ul style="list-style-type: none"> • Superior Ranger District (D7) • Kootenai Interagency Dispatch • Coeur d’Alene Interagency Dispatch
<p>MDC NOTIFICATIONS:</p> <ul style="list-style-type: none"> • District Duty Officer • Sanders County 911 • Determine if Sanders County 911 has dispatched county fire resources • Notify responding resources of county fire resource status • If smoke report is within 1 nautical mile of Superior Ranger District (D7), notify D7 Duty Officer • If smoke report is within 5 nautical miles of Kootenai Interagency Dispatch (KDC) boundary, notify KDC • If smoke report is within 5 nautical miles of Coeur d’Alene Interagency Dispatch (CDC) boundary, notify CDC
<p>AIRCRAFT IS ORDERED:</p> <ul style="list-style-type: none"> • Ensure helicopter is (or can be) configured to air drop water on the fire (bucket or tank).
<p>KNOWN HAZARDS:</p> <ul style="list-style-type: none"> • BPA 500 kV power lines.
<p>DUTY OFFICER CONSIDERATIONS:</p> <ul style="list-style-type: none"> • Determine if additional resources are necessary • Make standard notifications • If it is a human start, order an INV. If fire is human caused with criminal potential, order a USFS LEO

THIS PAGE INTENTIONALLY LEFT BLANK

West Zone – Superior Ranger District (D7)

Lolo National Forest



7-WENO D7 – West End North

AGENCY	UNIT	RESPONSE AREA #	RESPONSE AREA NAME	FDRA	CENTER POINT
USFS	D7	7-WENO	West End North	Lolo DNRC West	Dry Fork & Tamarack Junction N47° 22.7' x W115° 5.4'

DISPATCH RESPONSE LEVEL	LOW	MODERATE	HIGH
FIRE RESPONSE	Notify Duty Officer	Notify Duty Officer	Notify Duty Officer Prepare Kneeboard for Aircraft
<i>Fire Response to Consider</i>	<i>Notify Duty Officer</i>	<i>1 IA Module</i>	<i>1 Engine 1 IA Module 1 Helicopter</i>

RADIO GROUP	COMMAND	TAC	AIR-TO-AIR Zone	AIR-TO-GROUND Protection
West Zone	FS West Direct -OR- FS Camels	LNF TAC 3	A/A 1: 119.3500	A/G 05: 166.7500

SHARED BOUNDARY:

- Plains-Thompson Falls Ranger District (D5)
- Coeur d’Alene Interagency Dispatch
- DNRC Plains Unit

MDC NOTIFICATIONS:

- District Duty Officer
- Determine if Mineral County 911 has dispatched county fire resources
- Notify responding resources of county fire resource status
- If smoke report is within 1 nautical mile of Plains-Thompson Falls Ranger District (D5), notify D5 Duty Officer
- If smoke report is within 5 nautical miles of Coeur d’Alene Interagency Dispatch (CDC) boundary, notify CDC
- If smoke report is within 1 nautical mile of DNRC Plains Unit, notify Kalispell Dispatch Center

IF AIRCRAFT IS ORDERED:

- Ensure helicopter is or can be configured for water drops
- Big Creek Gravel Pit is available for initial and extended attack
N47° 22.499' x W115° 23.998'

KNOWN HAZARDS:

- BPA 500 kV power lines run east-west through the length of the Response Zone.
- BPA 500 kV power lines run north-south through the west portion of the Response Zone.

DUTY OFFICER CONSIDERATIONS:

- Determine if additional resources are necessary.
- Make standard notifications
- If it is a human start, order an INVF. If fire is human caused with criminal potential, order a USFS LEO.

7-STRE D7 – Saint Regis Area WUI

AGENCY	UNIT	RESPONSE AREA #	RESPONSE AREA NAME	FDRA	CENTER POINT
USFS	D7	7-STRE	St. Regis Area WUI	Lolo DNRC West	St. Regis I-90 exit 33 N47° 17.8' x W115° 5.9'

DISPATCH RESPONSE LEVEL	LOW	MODERATE	HIGH
FIRE RESPONSE	Notify Duty Officer	Notify Duty Officer	Notify Duty Officer Prepare Kneeboard for Aircraft
<i>Fire Response to Consider</i>	<i>Notify Duty Officer</i>	<i>1 IA Module</i>	<i>1 Engine 1 IA Module 1 Helicopter</i>

RADIO GROUP	COMMAND	TAC	AIR-TO-AIR Zone	AIR-TO-GROUND Protection
West Zone	FS West Direct -OR- FS Camels	LNF TAC 3	A/A 1: 119.3500	A/G 05: 166.7500

SHARED BOUNDARY:

- Plains-Thompson Falls Ranger District (D5)
- Coeur d'Alene Interagency Dispatch

MDC NOTIFICATIONS:

- District Duty Officer
- Determine if Mineral County 911 has dispatched county fire resources
- Notify responding resources of country fire resource status
- If smoke report is within 1 nautical mile of Plains-Thompson Falls Ranger District (D5), notify D5 Duty Officer
- If smoke report is within 5 nautical miles of Coeur d'Alene Interagency Dispatch (CDC) boundary, notify CDC

IF AIRCRAFT IS ORDERED:

- Ensure helicopter is or can be configured for water drops
- St. Regis Helibase available for initial and extended attack
N47° 18.259' x W115° 06.478'

KNOWN HAZARDS:

- BPA 500 kV power lines are near and occasionally in the Response Zone.

DUTY OFFICER CONSIDERATIONS:

- Determine if additional resources are necessary.
- Make standard notifications
- If it is a human start, order an INV. If fire is human caused with criminal potential, order a USFS LEO.

7-DBGA D7 – West End WUI (Saltese / Haugan / De Borgia)

AGENCY	UNIT	RESPONSE AREA #	RESPONSE AREA NAME	FDRA	CENTER POINT
USFS	D7	7-DBGA	West End WUI	Lolo DNRC West	De Borgia, I-90 exit 18 N47° 22.5' x W115° 20.9'

DISPATCH RESPONSE LEVEL	LOW	MODERATE	HIGH
FIRE RESPONSE	Notify Duty Officer	Notify Duty Officer	Notify Duty Officer Prepare Kneeboard for Aircraft
<i>Fire Response to Consider</i>	<i>Notify Duty Officer</i>	<i>1 IA Module</i>	<i>1 Engine 1 IA Module 1 Helicopter</i>

RADIO GROUP	COMMAND	TAC	AIR-TO-AIR Zone	AIR-TO-GROUND Protection
West Zone	FS West Direct -OR- Varies, based on location	LNF TAC 3	A/A 1: 119.3500	A/G 05: 166.7500

<p>SHARED BOUNDARY:</p> <ul style="list-style-type: none"> • Coeur d’Alene Interagency Dispatch
<p>NOTIFICATIONS:</p> <ul style="list-style-type: none"> • District Duty Officer • Determine if Mineral County 911 has dispatched county fire resources • Notify responding resources of county fire resources status • If smoke report is within 5 nautical miles of Coeur d’Alene Interagency Dispatch (CDC) boundary, notify CDC
<p>IF AIRCRAFT IS ORDERED:</p> <ul style="list-style-type: none"> • Ensure helicopter is or can be configured for water drops • Big Creek Gravel Pit is available for initial and extended attack N47° 22.499' x W115° 23.998'
<p>KNOWN HAZARDS:</p> <ul style="list-style-type: none"> • Interstate Traffic (I-90) • BPA 500 kV power lines are near and occasionally are in the response area.. • BPA 500 kV power lines cross I-90 near Rainy Creek in the response area.
<p>DUTY OFFICER CONSIDERATIONS:</p> <ul style="list-style-type: none"> • Determine if additional resources are necessary • Make standard notifications • If it is a human start, order an INV. If fire is human caused with criminal potential, order a USFS LEO

7-WESO D7 – West End South

AGENCY	UNIT	RESPONSE AREA #	RESPONSE AREA NAME	FDRA	CENTER POINT
USFS	D7	7-WESO	West End South	Lolo DNRC West	Newman Ridge N47° 17.1' x W115° 14.9'

DISPATCH RESPONSE LEVEL	LOW	MODERATE	HIGH
FIRE RESPONSE	Notify Duty Officer	Notify Duty Officer	Notify Duty Officer Prepare Kneeboard for Aircraft
<i>Fire Response to Consider</i>	<i>Notify Duty Officer</i>	<i>1 IA Module</i>	<i>1 Engine 1 IA Module 1 Helicopter</i>

RADIO GROUP	COMMAND	TAC	AIR-TO-AIR Zone	AIR-TO-GROUND Protection
West Zone	FS West Direct -OR- Varies, based on location	LNF TAC 3	A/A 1: 119.3500	A/G 05: 166.7500

<p>SHARED BOUNDARY:</p> <ul style="list-style-type: none"> Coeur d’Alene Interagency Dispatch
<p>MDC NOTIFICATIONS:</p> <ul style="list-style-type: none"> District Duty Officer Determine if Mineral County 911 has dispatched county fire resources Notify responding resources of county fire resources status If smoke report is within 5 nautical miles of Coeur d’Alene Interagency Dispatch (CDC) boundary, notify CDC
<p>IF AIRCRAFT IS ORDERED:</p> <ul style="list-style-type: none"> Ensure helicopter is or can be configured for water drops Big Creek Gravel Pit is available for initial and extended attack N47° 22.499' x W115° 23.998' St. Regis Helibase available for initial and extended attack N47° 18.259' x W115° 06.478'
<p>KNOWN HAZARDS:</p> <ul style="list-style-type: none"> BPA 500 kV power lines run NW-SE through the west portion of the response area.
<p>DUTY OFFICER CONSIDERATIONS:</p> <ul style="list-style-type: none"> Determine if additional resources are necessary. Make standard notifications If it is a human start, order an INV. If fire is human caused with criminal potential, order a USFS LEO.

7-EESO D7 – East End South

AGENCY	UNIT	RESPONSE AREA #	RESPONSE AREA NAME	FDRA	CENTER POINT
USFS	D7	7-EESO	East End South	Lolo DNRC West	Cayuse Saddle N47° 7.6' x W115° 0.2'

DISPATCH RESPONSE LEVEL	LOW	MODERATE	HIGH
FIRE RESPONSE	Notify Duty Officer	Notify Duty Officer	Notify Duty Officer Prepare Kneeboard for Aircraft
<i>Fire Response to Consider</i>	Notify Duty Officer	1 IA Module	1 Engine 1 IA Module 1 Helicopter

RADIO GROUP	COMMAND	TAC	AIR-TO-AIR Zone	AIR-TO-GROUND Protection
West Zone	FS West Direct	LNF TAC 3	A/A 1: 119.3500	A/G 05: 166.7500

SHARED BOUNDARY:

- Ninemile Ranger District (D4)
- Coeur d'Alene Interagency Dispatch
- Grangeville Interagency Dispatch

MDC NOTIFICATIONS:

- District Duty Officer
- Determine if Mineral County 911 has dispatched county fire resources
- Notify responding resources of county fire resources status
- If smoke report is within 1 nautical mile of Ninemile Ranger Station (D4), notify D4 Duty Officer
- If smoke report is within 5 nautical miles of Coeur d'Alene Interagency Dispatch (CDC) boundary, notify CDC
- If smoke report is within 5 nautical miles of Grangeville Interagency Dispatch (GVC) boundary, notify GVC

IF AIRCRAFT IS ORDERED:

- Ensure helicopter is or can be configured for water drops
- Mineral County Airport (9S4) is available for initial attack
N47° 10.092' x W114° 51.229'
- If aircraft does recover overnight at 9S4, a Land Use Agreement needs to be initiated
(See Duty Officer Considerations)

KNOWN HAZARDS:

- Unknown

DUTY OFFICER CONSIDERATIONS:

- Determine if additional resources are necessary
- Make standard notifications
- If it is a human start, order an INVF. If fire is human caused with criminal potential, order a USFS LEO
- Contact MDC if Land Use Agreements are needed. Need owner name, address, lat/long of property, phone number, and an email address for dispatch to send resource order

7-SUPR D7 – Superior Area WUI

AGENCY	UNIT	RESPONSE AREA #	RESPONSE AREA NAME	FDRA	CENTER POINT
USFS	D7	7-SUPR	Superior Area WUI	Lolo DNRC West	Superior I-90 exit 47 N47° 11.5' x W114° 53.4'

DISPATCH RESPONSE LEVEL	LOW	MODERATE	HIGH
FIRE RESPONSE	Notify Duty Officer	Notify Duty Officer	Notify Duty Officer Prepare Kneeboard for Aircraft
<i>Fire Response to Consider</i>	<i>Notify Duty Officer</i>	<i>1 IA Module</i>	<i>1 Engine 1 IA Module 1 Helicopter</i>

RADIO GROUP	COMMAND	TAC	AIR-TO-AIR Zone	AIR-TO-GROUND Protection
West Zone	FS West Direct -OR- FS Keystone	LNF TAC 3	A/A 1: 119.3500	A/G 05: 166.7500

SHARED BOUNDARY:

- Ninemile Ranger District (D4)
- Plains-Thompson Falls Ranger District (D5)

MDC NOTIFICATIONS:

- District Duty Officer
- Determine if Mineral County 911 has dispatched county fire resources
- Notify responding resources of county fire resources status
- If smoke report is within 1 nautical mile of Ninemile Ranger District (D4), notify D4 Duty Officer
- If smoke report is within 1 nautical miles of Plains-Thompson Falls District (D5), notify D5 Duty Officer

IF AIRCRAFT IS ORDERED:

- Ensure helicopter is or can be configured water drops
- Mineral County Airport (9S4) is available for initial attack
N47° 10.092' x W114° 51.229'
- If aircraft does recover overnight at 9S4, a Land Use Agreement needs to be initiated
(See Duty Officer Considerations)

KNOWN HAZARDS:

- BPA 500 kV power lines are north of and occasionally are in the response area

DUTY OFFICER CONSIDERATIONS:

- Determine if additional resources are necessary
- Make standard notifications
- If it is a human start, order an INVF. If fire is human caused with criminal potential, order a USFS LEO
- Contact MDC if Land Use Agreements are needed. Need owner name, address, lat/long of property, phone number, and an email address for dispatch to send resource order

7-EENO D7 – East End North

AGENCY	UNIT	RESPONSE AREA #	RESPONSE AREA NAME	FDRA	CENTER POINT
USFS	D7	7-EENO	East End North	Lolo DNRC West	Johnson Creek N47° 12.7' x W114° 48.6'

DISPATCH RESPONSE LEVEL	LOW	MODERATE	HIGH
FIRE RESPONSE	Notify Duty Officer	Notify Duty Officer	Notify Duty Officer Prepare Kneeboard for Aircraft
<i>Fire Response to Consider</i>	<i>Notify Duty Officer</i>	<i>1 IA Module</i>	<i>1 Engine 1 IA Module 1 Helicopter</i>

RADIO GROUP	COMMAND	TAC	AIR-TO-AIR Zone	AIR-TO-GROUND Protection
West Zone	FS West Direct -OR- FS Keystone	LNF TAC 3	A/A 1: 119.3500	A/G 05: 166.7500

SHARED BOUNDARY:

- Ninemile Ranger District (D4)
- Plains-Thompson Falls Ranger District (D5)

MDC NOTIFICATIONS:

- District Duty Officer
- Determine if Mineral County 911 has dispatched county fire resources
- Notify responding resources of county fire resources status
- If smoke report is within 1 nautical mile of Ninemile Ranger District (D4), notify D4 Duty Officer
- If smoke report is within 1 nautical miles of Plains-Thompson Falls District (D5), notify D5 Duty Officer

IF AIRCRAFT IS ORDERED:

- Ensure helicopter is or can be configured for water drops
- Mineral County Airport (9S4) is available for initial attack
N47° 10.092'x W114° 51.229'
- If aircraft does recover overnight at 9S4, a Land Use Agreement needs to be initiated
(See Duty Officer Considerations)

KNOWN HAZARDS:

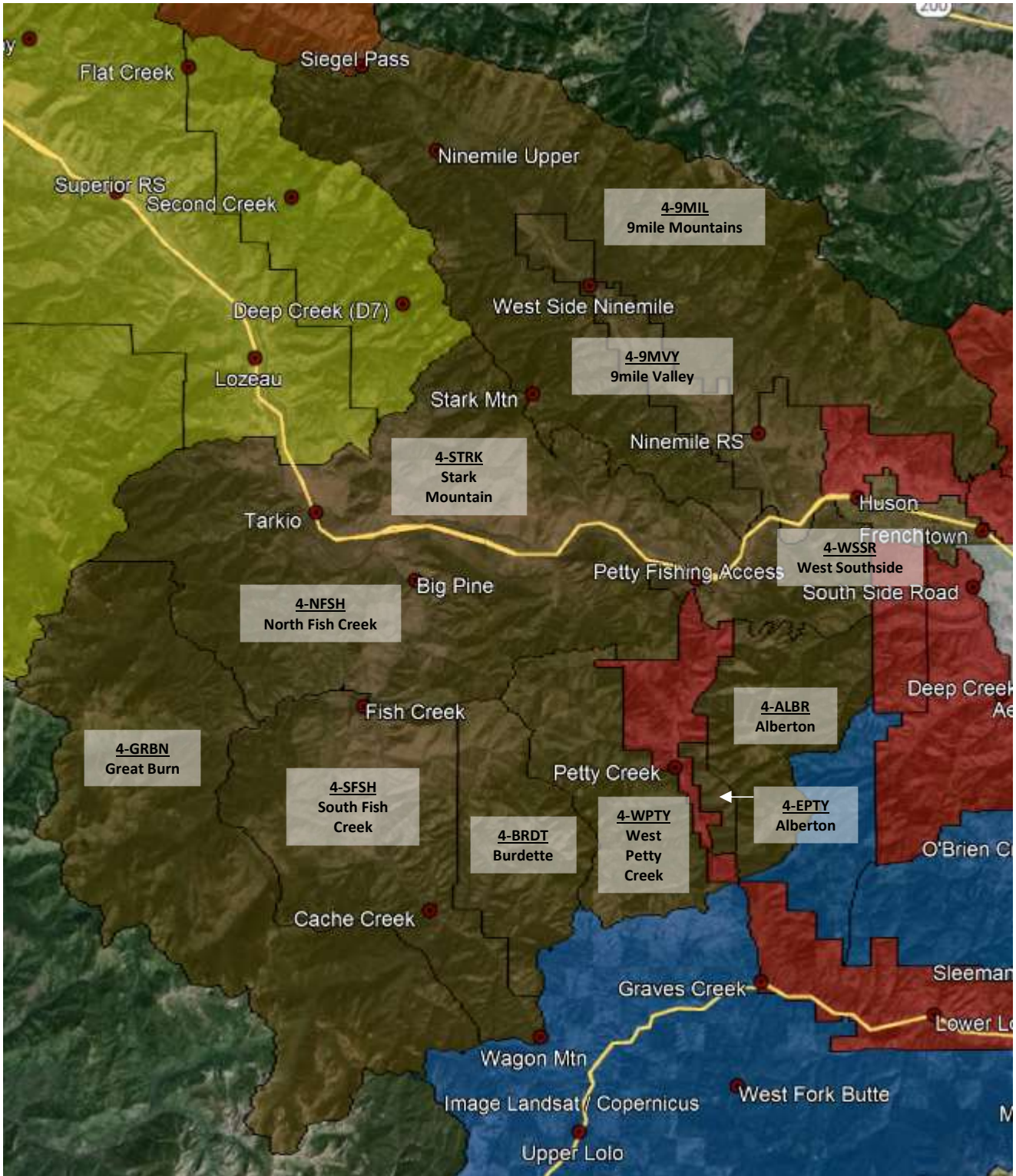
- BPA 500 kV power lines run east-west through the length of the 7-EENO Response Zone.

DUTY OFFICER CONSIDERATIONS:

- Determine if additional resources are necessary
- Make standard notifications
- If it is a human start, order an INVF. If fire is human caused with criminal potential, order a USFS LEO
- Contact MDC if Land Use Agreements are needed. Need owner name, address, lat/long of property, phone number, and an email address for dispatch to send resource order

Central Zone – Ninemile Ranger District (D4)

Lolo National Forest



4-9MIL D4 – 9Mile Mountains

AGENCY	UNIT	RESPONSE AREA #	RESPONSE AREA NAME	FDRA	CENTER POINT
USFS	D4	4-9MIL	9Mile Mountains	Lolo DNRC East	Kries Pond N47° 6.0' x W114° 25.5'

DISPATCH RESPONSE LEVEL	LOW	MODERATE	HIGH
FIRE RESPONSE	Notify Duty Officer	Notify Duty Officer	1 Engine Prepare Kneeboard for Aircraft

RADIO GROUP	COMMAND	TAC	AIR-TO-AIR <i>Zone</i>	AIR-TO-GROUND <i>Protection</i>
Central Zone	FS Stark	LNF TAC 2	A/A 3: 126.0500	A/G 48: 167.8875

SHARED BOUNDARY:

- DNRC Missoula Unit (MSO)
- Superior Ranger District (D7)
- Plains-Thompson Falls Ranger District (D5)
- Confederated Salish & Kootenai Tribes (CSKT – Flathead Agency)

MDC NOTIFICATIONS:

- District Duty Officer
- Determine if Missoula County 911 has dispatched county fire resources
- Determine if Missoula County 911 has notified adjacent cooperators within 1 mile of smoke report
- Notify responding resources of county fire resources status
- If the smoke report is within 1 nautical mile of DNRC Missoula Unit (MSO), notify MSO Duty Officer
- If the smoke report is within 1 nautical mile of Superior Ranger District (D7), notify D7 Duty Officer
- If the smoke report is within 1 nautical mile of Plains-Thompson Falls Ranger District (D5), notify D5 Duty Officer
- If smoke report is within 1 nautical mile of CSKT, notify Ronan Dispatch Center

IF AIRCRAFT IS ORDERED:

- Ensure helicopter is or can be configured for long line and bucket work
- Ninemile Airstrip is available for initial attack
N47° 4.6 x W114° 24.9'; Elevation 3300'

KNOWN HAZARDS:

- BPA Powerlines running south and west in the response area.
- Kreis Pond recreational site
- Reservation and Ninemile Divides identified as areas of concern for firefighter safety and efficiency

DUTY OFFICER CONSIDERATIONS:

- Reservation Divide IRA along northern portion of response area. Very limited access to this area
- Stark Mountain IRA along southwestern portions of response area. Very limited access to this area
- Stark Mountain Lookout fully staffed during summer and is located within response area
- During High Dispatch Response Level, consider dispatching an ICT4
- Make standard notifications
- If it is a human start, order an INVF. If fire is human caused with criminal potential, order a USFS LEO

4-9MVY D4 – 9Mile Valley

AGENCY	UNIT	RESPONSE AREA #	RESPONSE AREA NAME	FDRA	CENTER POINT
USFS	D4	4-9MVY	9Mile Valley	Lolo DNRC East	Cedar Creek Road N47° 6.2' x W114° 28.8

DISPATCH RESPONSE LEVEL	LOW	MODERATE	HIGH
FIRE RESPONSE	Notify Duty Officer	Notify Duty Officer	1 Engine Prepare Kneeboard for Aircraft

RADIO GROUP	COMMAND	TAC	AIR-TO-AIR <i>Zone</i>	AIR-TO-GROUND <i>Protection</i>
Central Zone	FS Stark	LNF TAC 2	A/A 3: 126.0500	A/G 48: 167.8875

SHARED BOUNDARY:

- Missoula County (LG04)
- DNRC Missoula Unit (MSO)

NOTIFICATIONS:

- District Duty Officer
- Determine if Missoula County 911 has dispatched county fire resources
- Determine if Missoula County 911 has notified adjacent cooperators within 1 mile of smoke report
- Notify responding resources of county fire resources status
- If the smoke report is within 1 nautical mile of DNRC Missoula Unit (MSO), notify MSO Duty Officer

IF AIRCRAFT IS ORDERED:

- Ensure helicopter is or can be configured for long line, bucket work, and/or crew shuttle.
- Ninemile Airstrip is available for initial attack
N47° 4.6 x W114° 24.9'; Elevation 3300'

KNOWN HAZARDS:

- Populated WUI area.
- Heavy traffic along main Ninemile Valley Road

DUTY OFFICER CONSIDERATIONS:

- Determine if additional resources are necessary
- During High Dispatch Response Level, consider dispatching an ICT4
- Make standard notifications
- If it is a human start, order an INVF. If fire is human caused with criminal potential, order a USFS LEO

4-STRK D4 – Stark Mountain

AGENCY	UNIT	RESPONSE AREA #	RESPONSE AREA NAME	FDRA	CENTER POINT
USFS	D4	4-STRK	Stark Mountain	Lolo DNRC West	Sheridan Creek N47° 3.9' x W114° 37.3'

DISPATCH RESPONSE LEVEL	LOW	MODERATE	HIGH
FIRE RESPONSE	Notify Duty Officer	Notify Duty Officer	1 Engine Prepare Kneeboard for Aircraft

RADIO GROUP	COMMAND	TAC	AIR-TO-AIR <i>Zone</i>	AIR-TO-GROUND <i>Protection</i>
Central Zone	FS Stark	LNF TAC 2	A/A 3: 126.0500	A/G 48: 167.8875

SHARED BOUNDARY:

- Superior Ranger District (D7)

MDC NOTIFICATIONS:

- District Duty Officer
- Determine if Missoula County 911 has dispatched county fire resources
- Determine if Missoula County 911 has notified adjacent cooperators within 1 mile of smoke report
- Notify responding resources of county fire resources status
- If smoke report is within 1 nautical mile of Superior Ranger District (D7), notify D7 Duty Officer

IF AIRCRAFT IS ORDERED:

- Ensure helicopter is or can be configured for long line, bucket work, and/or crew shuttle.
- Ninemile Airstrip is available for initial attack support
N47° 4.6 x W114° 24.9'; Elevation 3300'
- Sawmill Gulch Helispot is available for initial attack support
N47° 58.626' x W114° 31.716'; Elevation 3500'

KNOWN HAZARDS:

- BPA Powerlines running through the middle of the response area.
- Heavy traffic along the I-90 corridor
- Ninemile Divide identified as area of concern for firefighter safety and efficiency
- Heavy equipment and personnel associated within the Stark Contrast Timber Sale in the Nemote Creek drainage
Ingress/egress into sale area is limited

DUTY OFFICER CONSIDERATIONS:

- Determine if additional resources are necessary
- During High Dispatch Response Level, consider dispatching an ICT4
- Make standard notifications
- If it is a human start, order an INVF. If fire is human caused with criminal potential, order a USFS LEO

4-NFSH D4 – North Fish Creek

AGENCY	UNIT	RESPONSE AREA #	RESPONSE AREA NAME	FDRA	CENTER POINT
USFS	D4	4-NFSH	North Fish Creek	Lolo DNRC West	Big Pine N46° 59.4' x W114° 39.7'

DISPATCH RESPONSE LEVEL	LOW	MODERATE	HIGH
FIRE RESPONSE	Notify Duty Officer	Notify Duty Officer	1 Engine Prepare Kneeboard for Aircraft

RADIO GROUP	COMMAND	TAC	AIR-TO-AIR Zone	AIR-TO-GROUND Protection
Central Zone	FS Stark <i>Consider a portable repeater</i>	LNF TAC 2	A/A 3: 126.0500	A/G 48: 167.8875

SHARED BOUNDARY:

- Superior Ranger District (D7)
- DNRC Missoula Unit (MSO)

MDC NOTIFICATIONS:

- District Duty Officer
- Determine if Missoula County 911 has dispatched county fire resources
- Determine if Missoula County 911 has notified adjacent cooperators within 1 mile of smoke report
- Notify responding resources of county fire resources status
- If smoke report is within 1 nautical mile of Superior Ranger District (D7), notify D7 Duty Officer
- If smoke report is within 1 nautical mile of DNRC Missoula Unit (MSO), notify MSO Duty Officer

IF AIRCRAFT IS ORDERED:

- Ensure helicopter is or can be configured for long line, bucket work, and/or crew shuttle
- Ninemile Airstrip is available for initial attack support
N47° 4.6 x W114° 24.9'; Elevation 3300'
- Sawmill Gulch Helispot is available for initial attack support
N47° 58.626' x W114° 31.716'; Elevation 3500'

KNOWN HAZARDS:

- Heavy recreational traffic along the main Fish Creek Road (FS Road 343) in the summer and fall
- Heavy traffic along I-90 corridor
- Poor road access in the area
- Consider aircraft if needed for emergency support

DUTY OFFICER CONSIDERATIONS:

- Determine if additional resources are necessary
- Make standard notifications
- Response area contains small portion of Great Burn Proposed Wilderness on the western boundary
- Areas within and adjacent to response area have shown historic large fire growth
- If it is a human start, order an INVF. If fire is human caused with criminal potential, order a USFS LEO

4-GRBN D4 – Great Burn

AGENCY	UNIT	RESPONSE AREA #	RESPONSE AREA NAME	FDRA	CENTER POINT
USFS	D4	4-GRBN	Great Burn	Lolo DNRC West	Straight Peak N47° 53.0' x W114° 53.6'

DISPATCH RESPONSE LEVEL	LOW	MODERATE	HIGH
FIRE RESPONSE	Notify Duty Officer	Notify Duty Officer	1 IA Module -OR- 1 Engine Prepare Kneeboard for Aircraft

RADIO GROUP	COMMAND	TAC	AIR-TO-AIR <i>Zone</i>	AIR-TO-GROUND <i>Protection</i>
Central Zone	FS White	LNF TAC 2	A/A 3: 126.0500	A/G 48: 167.8875

SHARED BOUNDARY:

- Missoula Ranger District (D3)
- Grangeville Interagency Dispatch

MDC NOTIFICATIONS:

- District Duty Officer
- Determine if Mineral County 911 has dispatched county fire resources or notified Superior Ranger District
- Determine if Mineral County 911 has notified Missoula County 911
- Notify responding resources of county fire resources status
- If smoke report is within 1 nautical mile of Missoula Ranger District (D3), notify D3 Duty Officer
- If smoke report is within 5 nautical miles of Grangeville Interagency Dispatch (GVC) boundary, notify GVC

IF AIRCRAFT IS ORDERED:

- Ensure helicopter is or can be configured for long line, bucket work, and/or crew shuttle.
- Ninemile Airstrip is available for initial attack support
N47° 4.6 x W114° 24.9'; Elevation 3300'
- Beaver Ponds Helispot is available for initial attack support
N46° 46.897' x W114° 35.457'

KNOWN HAZARDS:

- This area falls into a proposed wilderness category and emergency access can be limited
- Area has been identified as an area of concern for firefighter safety and efficiency

DUTY OFFICER CONSIDERATIONS:

- Determine if additional resources are necessary
- Make standard notifications
- If it is a human start, order an INVF. If fire is human caused with criminal potential, order a USFS LEO

4-SFSH D4 – South Fish Creek

AGENCY	UNIT	RESPONSE AREA #	RESPONSE AREA NAME	FDRA	CENTER POINT
USFS	D4	4-SFSH	South Fish Creek	Lolo DNRC West	Surveyor Creek N46° 50.6' x W114° 42.4'

DISPATCH RESPONSE LEVEL	LOW	MODERATE	HIGH
FIRE RESPONSE	Notify Duty Officer	Notify Duty Officer	1 Engine Prepare Kneeboard for Aircraft

RADIO GROUP	COMMAND	TAC	AIR-TO-AIR Zone	AIR-TO-GROUND Protection
Central Zone	FS White <i>Consider a portable repeater</i>	LNF TAC 2	A/A 3: 126.0500	A/G 48: 167.8875

SHARED BOUNDARY:

- Missoula Ranger District (D3)

MDC NOTIFICATIONS:

- District Duty Officer
- Determine if Mineral County 911 has dispatched county fire resources
- Notify responding resources of county fire resources status
- If smoke report is within 1 nautical mile of Missoula Ranger District (D3), notify D3 Duty Officer

IF AIRCRAFT IS ORDERED:

- Ensure helicopter is or can be configured for long line, bucket work, and/or crew shuttle.
- Ninemile Airstrip is available for initial attack support
N47° 4.6 x W114° 24.9'; Elevation 3300'
- Clearwater Crossing is available for initial attack support
N46° 54.469' x W114° 48.270'; Elevation 3485'

KNOWN HAZARDS:

- Heavy recreational traffic along the main Fish Creek Road (FS Road 343) in the summer and fall
- Road access available to much of the response area, but road conditions are unknown or questionable

DUTY OFFICER CONSIDERATIONS:

- Determine if additional resources are necessary
- Make standard notifications
- If it is a human start, order an INVF. If fire is human caused with criminal potential, order a USFS LEO

4-BRDT D4 – Burdette

AGENCY	UNIT	RESPONSE AREA #	RESPONSE AREA NAME	FDRA	CENTER POINT
USFS	D4	4-BRDT	Burdette	Lolo DNRC West	Ridge Top E of Burdette Creek N47° 51.7' x W114° 35.3

DISPATCH RESPONSE LEVEL	LOW	MODERATE	HIGH
FIRE RESPONSE	Notify Duty Officer	Notify Duty Officer	1 IA Module -OR- 1 Engine Prepare Kneeboard for Aircraft

RADIO GROUP	COMMAND	TAC	AIR-TO-AIR Zone	AIR-TO-GROUND Protection
Central Zone	FS White	LNF TAC 2	A/A 3: 126.0500	A/G 48: 167.8875

SHARED BOUNDARY:

- Missoula Ranger District (D3)

MDC NOTIFICATIONS:

- District Duty Officer
- If smoke report is in western half of response area, determine if Mineral County 911 has dispatched county fire resources
- If smoke report is in eastern half of response area, determine if Missoula County 911 has dispatched county fire resources
- Determine if Missoula County 911 has notified adjacent cooperators within 1 mile of smoke report
- Notify responding resources of county fire resources status
- If smoke report is within 1 nautical mile of Missoula Ranger District (D3), notify D3 Duty Officer

IF AIRCRAFT IS ORDERED:

- Ensure helicopter is or can be configured for long line, bucket work, and/or crew shuttle.
- Ninemile Airstrip is available for initial attack support
N47° 4.6 x W114° 24.9'; Elevation 3300'
- Sawmill Gulch Helispot is available for initial attack support
N46° 58.614' x W114° 31.766'; Elevation 3500'

KNOWN HAZARDS:

- Much of this country is in the Burdette Inventoried Roadless Area and access is limited
- Area has been identified as an area of concern for firefighter safety and efficiency

DUTY OFFICER CONSIDERATIONS:

- Determine if additional resources are necessary
- Make standard notifications
- If it is a human start, order an INV. If fire is human caused with criminal potential, order a USFS LEO

4-WPTY D4 – West Petty Creek

AGENCY	UNIT	RESPONSE AREA #	RESPONSE AREA NAME	FDRA	CENTER POINT
USFS	D4	4-WPTY	West Petty Creek	Lolo DNRC East	

DISPATCH RESPONSE LEVEL	LOW	MODERATE	HIGH
FIRE RESPONSE	Notify Duty Officer	Notify Duty Officer	1 Engine Prepare Kneeboard for Aircraft

RADIO GROUP	COMMAND	TAC	AIR-TO-AIR Zone	AIR-TO-GROUND Protection
Central Zone	FS Stark – OR- FS White	LNF TAC 2	A/A 3: 126.0500	A/G 48: 167.8875

SHARED BOUNDARY:

- DNRC Missoula Unit (MSO)
- Missoula Ranger District (D3)

MDC NOTIFICATIONS:

- District Duty Officer
- If smoke report is in the North-Western corner of response area, determine if Mineral County 911 has dispatched county fire resources
- If smoke report is in the remainder of response area, determine if Missoula County 911 has dispatched county fire resources
- Determine if Missoula County 911 has notified adjacent cooperators within 1 mile of smoke report
- Notify responding resources of county fire resources status
- If smoke report is within 1 nautical mile of Missoula Ranger District (D3), notify D3 Duty Officer
- If smoke report is within 1 nautical mile of DNRC Missoula Unit (MSO), notify MSO Duty Officer

IF AIRCRAFT IS ORDERED:

- Ensure helicopter is or can be configured for long line, bucket work, and/or crew shuttle.
- Ninemile Airstrip is available for initial attack support
N47° 4.6 x W114° 24.9'; Elevation 3300'
- Sawmill Gulch Helispot is available for initial attack support
N46° 58.614' x W114° 31.766'; Elevation 3500'

KNOWN HAZARDS:

- BPA Powerlines running northeast in the response area
- Heavy traffic in the summertime along the main Petty Creek Road
- Response Area includes the Garden Point IRA, with very limited access
- Garden Point Jeep Trail (FS Road 5539-2) can be utilized by 4x4 vehicles
- West Fork Petty Creek Road (FS Road 22) most populated sub-drainage in Petty Creek
This road system is one way in and one way out

DUTY OFFICER CONSIDERATIONS:

- Determine if additional resources are necessary
- Make standard notifications
- If it is a human start, order an INVF. If fire is human caused with criminal potential, order a USFS LEO

4-EPTY D4 – East Petty Creek

AGENCY	UNIT	RESPONSE AREA #	RESPONSE AREA NAME	FDRA	CENTER POINT
USFS	D4	4-EPTY	East Petty Creek	Lolo DNRC East	N46° 52.8' x W114° 26.3'

DISPATCH RESPONSE LEVEL	LOW	MODERATE	HIGH
FIRE RESPONSE	Notify Duty Officer	Notify Duty Officer	1 Engine Prepare Kneeboard for Aircraft

RADIO GROUP	COMMAND	TAC	AIR-TO-AIR Zone	AIR-TO-GROUND Protection
Central Zone	FS Stark – OR- FS White	LNF TAC 2	A/A 3: 126.0500	A/G 48: 167.8875

SHARED BOUNDARY:

- DNRC Missoula Unit (MSO)

MDC NOTIFICATIONS:

- District Duty Officer
- Determine if Missoula County 911 has dispatched county fire resources
- Determine if Missoula County 911 has notified adjacent cooperators within 1 mile of smoke report
- Notify responding resources of county fire resources status
- If smoke report is within 1 nautical mile of DNRC Missoula Unit (MSO), notify MSO Duty Officer

IF AIRCRAFT IS ORDERED:

- Ensure helicopter is or can be configured for long line, bucket work, and/or crew shuttle.
- Ninemile Airstrip is available for initial attack support
N47° 4.6 x W114° 24.9'; Elevation 3300'
- Sawmill Gulch Helispot is available for initial attack support
N46° 58.614' x W114° 31.766'; Elevation 3500'

KNOWN HAZARDS:

- High traffic concentrations in the summer along main Petty Creek Road

DUTY OFFICER CONSIDERATIONS:

- Determine if additional resources are necessary
- Make standard notifications
- If it is a human start, order an INVF. If fire is human caused with criminal potential, order a USFS LEO

4-ALBR D4 – Albert Point

AGENCY	UNIT	RESPONSE AREA #	RESPONSE AREA NAME	FDRA	CENTER POINT
USFS	D4	4-ALBR	Albert Point	Lolo DNRC East	Petty Mountain N47° 54.7' x W114° 24.3'

DISPATCH RESPONSE LEVEL	LOW	MODERATE	HIGH
FIRE RESPONSE	Notify Duty Officer	1 IA Module	1 IA Module Prepare Kneeboard for Aircraft

RADIO GROUP	COMMAND	TAC	AIR-TO-AIR <i>Zone</i>	AIR-TO-GROUND <i>Protection</i>
Central Zone	FS Stark – OR- FS White	LNF TAC 2	A/A 3: 126.0500	A/G 48: 167.8875

SHARED BOUNDARY:

- DNRC Missoula Unit (MSO)
- Missoula Ranger District (D3)

MDC NOTIFICATIONS:

- District Duty Officer
- Determine if Missoula County 911 has dispatched county fire resources
- Notify responding resources of county fire resources status
- If smoke report is within 1 nautical mile of DNRC Missoula Unit (MSO), notify MSO Duty Officer
- If smoke report is within 1 nautical mile of Missoula Ranger District (D3), notify D3 Duty Officer

IF AIRCRAFT IS ORDERED:

- Ensure helicopter is or can be configured for long line, bucket work, and/or crew shuttle.
- Ninemile Airstrip is available for initial attack support
N47° 4.6 x W114° 24.9'; Elevation 3300'
- Sawmill Gulch Helispot is available for initial attack support
N46° 58.614' x W114° 31.766'; Elevation 3500'

KNOWN HAZARDS:

- BPA Powerlines running north and east of Albert Point
- South Side Road (FS Road 453) traffic
- Response Area includes Petty Mountain IRA with very limited access
- Area has been identified as an area of concern for firefighter safety and efficiency

DUTY OFFICER CONSIDERATIONS:

- Determine if additional resources are necessary
- Make standard notifications
- If it is a human start, order an INVF. If fire is human caused with criminal potential, order a USFS LEO

4-WSSR D4 – West Southside

AGENCY	UNIT	RESPONSE AREA #	RESPONSE AREA NAME	FDRA	CENTER POINT
USFS	D4	4-WSSR	West Southside	Lolo DNRC East	N46° 59.7' x W114° 22.8'

DISPATCH RESPONSE LEVEL	LOW	MODERATE	HIGH
FIRE RESPONSE	Notify Duty Officer	Notify Duty Officer	1 Engine Prepare Kneeboard for Aircraft

RADIO GROUP	COMMAND	TAC	AIR-TO-AIR Zone	AIR-TO-GROUND Protection
Central Zone	FS Stark	LNF TAC 2	A/A 3: 126.0500	A/G 48: 167.8875

SHARED BOUNDARY:

- DNRC Missoula Unit (MSO)
- Missoula County (LG04)

MDC NOTIFICATIONS:

- District Duty Officer
- Determine if Missoula County 911 has dispatched county fire resources
- Notify responding resources of county fire resources status
- If smoke report is within 1 nautical mile of DNRC Missoula Unit (MSO), notify MSO Duty Officer

IF AIRCRAFT IS ORDERED:

- Ensure helicopter is or can be configured for long line, bucket work, and/or crew shuttle
- Ninemile Airstrip is available for initial attack support
N47° 4.6 x W114° 24.9'; Elevation 3300'
- Sawmill Gulch Helispot is available for initial attack support
N46° 58.614' x W114° 31.766'; Elevation 3500'

KNOWN HAZARDS:

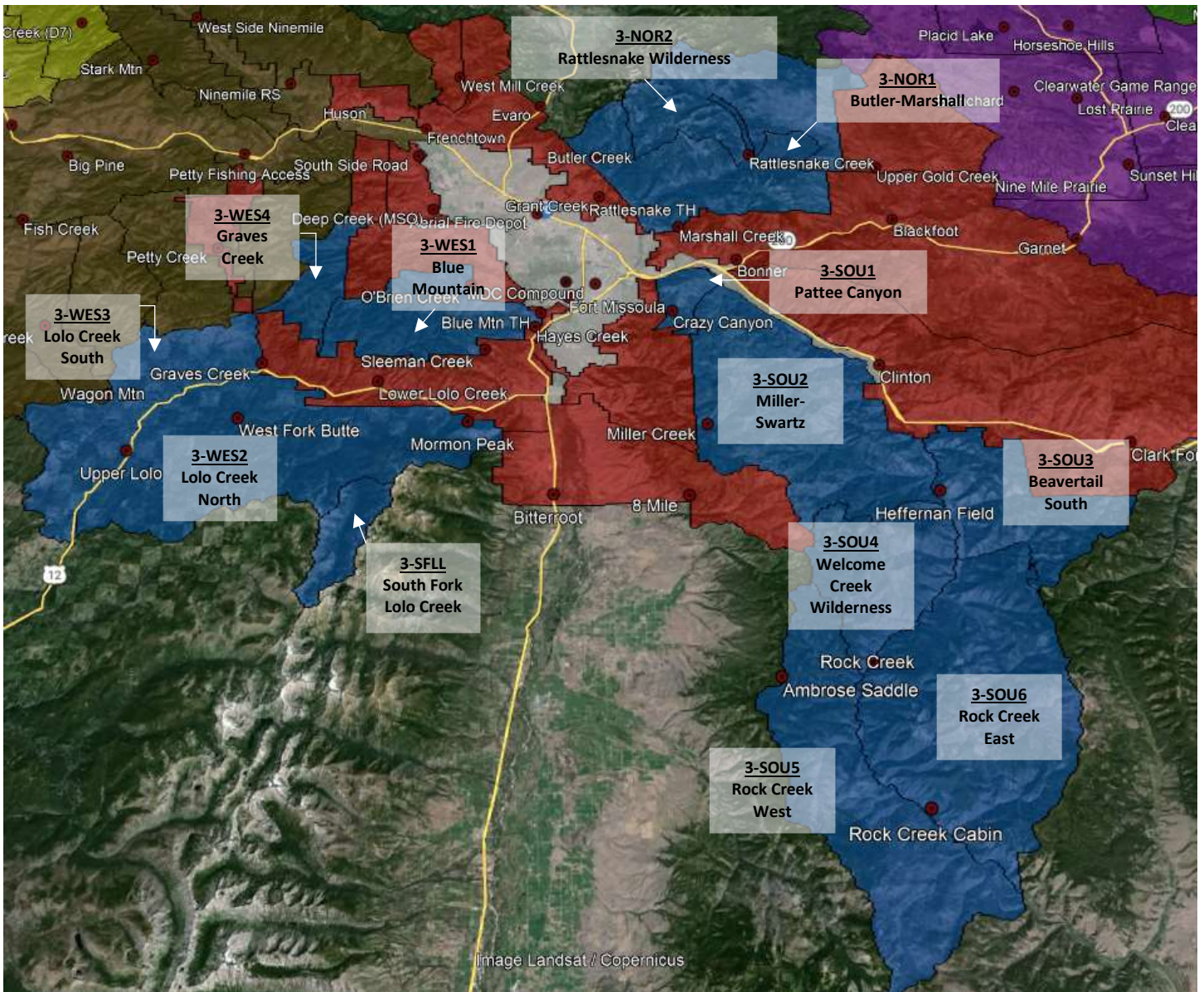
- BPA Powerlines running northeast through the response area from Albert Creek to I-90 near Peppard Gulch
- Heavy traffic and camping along the South Side Road (FS Road 453)
- Train tracks run along the northern portion of the response area

DUTY OFFICER CONSIDERATIONS:

- Determine if additional resources are necessary
- Make standard notifications
- If it is a human start, order an INVF. If fire is human caused with criminal potential, order a USFS LEO

Central Zone – Missoula Ranger District (D3)

Lolo National Forest



3-WES1 D3 – Blue Mountain

AGENCY	UNIT	RESPONSE AREA #	RESPONSE AREA NAME	FDRA	CENTER POINT
USFS	D3	3-WES1	Blue Mountain	Lolo DNRC East	McClay Flat Trailhead N46° 50.1' x W114° 6.2'

DISPATCH RESPONSE LEVEL	LOW	MODERATE	HIGH
FIRE RESPONSE	Notify Duty Officer	Notify Duty Officer	Notify Duty Officer Prepare Kneeboard for Aircraft

RADIO GROUP	COMMAND	TAC	AIR-TO-AIR Zone	AIR-TO-GROUND Protection
Central Zone	FS Blue Mountain – OR- FS Central Direct	LNF Tac 3 <i>Mutual Aid: Red</i>	A/A 3: 126.0500	A/G 48: 167.8875

SHARED BOUNDARY:

- Ninemile Ranger District (D4)
- DNRC Missoula Unit (MSO)

MDC NOTIFICATIONS:

- District Duty Officer
- Determine if Missoula County 911 has dispatched county fire resources
- Notify responding resources of county fire resources status
- If smoke report is within 1 nautical mile of DNRC Missoula Unit (MSO), notify MSO Duty Officer
- If smoke report is within 1 nautical mile of Ninemile Ranger District (D4), notify D4 Duty Officer

IF AIRCRAFT IS ORDERED:

- BPA Powerlines

KNOWN HAZARDS:

- BPA powerline
- Recreators (horseback, walk/running, disc golf, UTVs, dirt bikes, etc.) in fire area with no quick routes of egress
- One-way vehicle ingress and egress in O’Brien Creek
- Potential for transient population in the Blue Mountain area. Report all camps to USFS LEO and district rec staff.

DUTY OFFICER CONSIDERATIONS:

MAJOR VALUES

- Blue Mountain Lookout & Recreation Area (BMRA)
- Residents in O’Brien Creek, Blue Mtn road, and Big Flat Road area, Residents in Hayes Creek, Sleeman Creek, lower Hwy 12 corridor, Graves Creek.
- BPA powerlines.
- Lewis & Clark National Historic Trail Center.

OTHER CONSIDERATIONS

- Determine if additional resources are necessary
- Make standard notifications
- If it is a human start, order an INV. If fire is human caused with criminal potential, order a USFS LEO.
- If fires are within road corridors, consider law enforcement presence for traffic control.
- Fires in BMRA are historically started by humans. Protect fire origins when possible.

3-WES2 D3 – Lolo Creek North

AGENCY	UNIT	RESPONSE AREA #	RESPONSE AREA NAME	FDRA	CENTER POINT
USFS	D3	3-WES2	Lolo Creek North	Lolo DNRC East	Elk Meadows Road N46° 44.8' x W114° 18.9'

DISPATCH RESPONSE LEVEL	LOW	MODERATE	HIGH
FIRE RESPONSE	Notify Duty Officer	Notify Duty Officer	Notify Duty Officer Prepare Kneeboard for Aircraft

RADIO GROUP	COMMAND	TAC	AIR-TO-AIR Zone	AIR-TO-GROUND Protection
Central Zone	FS White -OR- Point 118 (when installed)	LNF Tac 3 <i>Mutual Aid: Red</i>	A/A 3: 126.0500	A/G 48: 167.8875

<p>SHARED BOUNDARY:</p> <ul style="list-style-type: none"> • DNRC Missoula Unit (MSO) • Bitterroot Interagency Dispatch • Grangeville Interagency Dispatch
<p>MDC NOTIFICATIONS:</p> <ul style="list-style-type: none"> • District Duty Officer • Determine if Missoula County 911 has dispatched county fire resources • Notify responding resources of county fire resources status • If smoke report is within 1 nautical mile of DNRC Missoula Unit (MSO), notify MSO Duty Officer • If smoke report is within 5 nautical miles of Bitterroot Interagency Dispatch (BRC) boundary, notify BRC • If smoke report is within 5 nautical miles of Grangeville Interagency Dispatch (GVC) boundary, notify GVC
<p>IF AIRCRAFT IS ORDERED:</p> <ul style="list-style-type: none"> •
<p>KNOWN HAZARDS:</p> <ul style="list-style-type: none"> • Remote response area in many places. • U.S. highway 12 traffic. • Motorized use trail on Lee Ridge (#295) and Mill Creek (#1310). • Numerous snags/weakened trees from 2017 Lolo Peak Fire scar.
<p>DUTY OFFICER CONSIDERATIONS:</p> <p><u>MAJOR VALUES</u></p> <ul style="list-style-type: none"> • West Fork Butte and Skookum Butte Lookouts. • Lolo Pass Visitor Center & Hot Springs • Lolo Creek watershed • Fort Fizzle • Residents in Hwy 12 corridor of Lolo Creek • Lee Creek (phone reception), Lolo Creek, and Earl Tennant campgrounds • Nez Perce and Lewis & Clark National Historic Trail <p><u>OTHER CONSIDERATIONS</u></p> <ul style="list-style-type: none"> • Determine if additional resources are necessary • Make standard notifications • If it is a human start, order an INVF. If fire is human caused with criminal potential, order a USFS LEO. • If fires are near Highway 12 road corridors, consider law enforcement for traffic control • Consider portable repeater in West Fork Butte Lookout area for upper reaches of response area.

3-WES3 D3 – Lolo Creek South

AGENCY	UNIT	RESPONSE AREA #	RESPONSE AREA NAME	FDRA	CENTER POINT
USFS	D3	3-WES3	Lolo Creek South	Lolo DNRC East	Howard Creek N46° 46.6' x W114° 26.3'

DISPATCH RESPONSE LEVEL	LOW	MODERATE	HIGH
FIRE RESPONSE	Notify Duty Officer	Notify Duty Officer	Notify Duty Officer Prepare Kneeboard for Aircraft

RADIO GROUP	COMMAND	TAC	AIR-TO-AIR Zone	AIR-TO-GROUND Protection
Central Zone	FS White -OR- Point 118 <i>(when installed)</i>	LNF Tac 3 <i>Mutual Aid: Red</i>	A/A 3: 126.0500	A/G 48: 167.8875

SHARED BOUNDARY:

- Ninemile Ranger District (D4)
- DNRC Missoula Unit (MSO)
- Grangeville Interagency Dispatch

MDC NOTIFICATIONS:

- District Duty Officer
- Determine if Missoula County 911 has dispatched county fire resources
- Notify responding resources of county fire resources status
- If smoke report is within 1 nautical mile of Ninemile Ranger District (D4), notify D4 Duty Officer
- If smoke report is within 1 nautical mile of DNRC Missoula Unit (MSO), notify MSO Duty Officer
- If smoke report is within 5 nautical miles of Grangeville Interagency Dispatch (GVC) boundary, notify GVC

IF AIRCRAFT IS ORDERED:

-

KNOWN HAZARDS:

- Remote response area in many places.
- U.S. highway 12 traffic
- Motorized use on Granite Ridge trail (#289), Tepee Creek Ridge (#26), and North Fork Howard Creek trail (#322).
- Numerous snags/weakened trees from Hopeful 2 and North Howard fires (2003)

DUTY OFFICER CONSIDERATIONS:

MAJOR VALUES

- Lolo Hot Springs & Lolo Pass Visitor Center
- Lolo Creek watershed
- Residents in Grave Creek, HWY 12 Corridor, and Lumberjack Saloon
- Lee Creek (phone reception), Lolo Creek, and Earl Tennant campgrounds
- Nez Perce (Nee Mee Poo) and Lewis & Clark National Historic Trail

OTHER CONSIDERATIONS

- Determine if additional resources are necessary
- Make standard notifications
- If it is a human start, order an INVF. If fire is human caused with criminal potential, order a USFS LEO.
- If fires are near highway 12 road corridors, consider law enforcement presence for traffic control

3-WES4 D3 – Graves Creek

AGENCY	UNIT	RESPONSE AREA #	RESPONSE AREA NAME	FDRA	CENTER POINT
USFS	D3	3-WES4	Graves Creek	Lolo DNRC East	Telephone Butte N46° 51.1' x W114° 20.7'

DISPATCH RESPONSE LEVEL	LOW	MODERATE	HIGH
FIRE RES.PONSE	Notify Duty Officer	Notify Duty Officer	Notify Duty Officer Prepare Kneeboard for Aircraft

RADIO GROUP	COMMAND	TAC	AIR-TO-AIR Zone	AIR-TO-GROUND Protection
Central Zone	FS White -OR- Point 118 <i>(when installed)</i>	LNF Tac 3 <i>Mutual Aid: Red</i>	A/A 3: 126.0500	A/G 48: 167.8875

<p>SHARED BOUNDARY:</p> <ul style="list-style-type: none"> Ninemile Ranger District (D4) DNC Missoula Unit (MSO)
<p>MDC NOTIFICATIONS:</p> <ul style="list-style-type: none"> District Duty Officer Determine if Missoula County 911 has dispatched county fire resources Notify responding resources of county fire resources status If smoke report is within 1 nautical mile of Ninemile Ranger District (D4), notify D4 Duty Officer If smoke report is within 1 nautical mile of DNRC Missoula Unit (MSO), notify MSO Duty Officer
<p>IF AIRCRAFT IS ORDERED:</p> <ul style="list-style-type: none"> BPA Powerline
<p>KNOWN HAZARDS:</p> <ul style="list-style-type: none"> BPA powerline. Potential delays in getting adequate emergency care because of some remoteness in this response area. Hikers/recreators/motorbikes in fire area with no quick routes of egress. One-way vehicle ingress and egress in O'Brien Creek. Lack of good safety zones in heavy timber with poor access
<p>DUTY OFFICER CONSIDERATIONS:</p> <p><u>MAJOR VALUES</u></p> <ul style="list-style-type: none"> FS trail system Wildlife habitat <p><u>OTHER CONSIDERATIONS</u></p> <ul style="list-style-type: none"> Determine if additional resources are necessary Make standard notifications If it is a human start, order an INVF. If fire is human caused with criminal potential, order a USFS LEO.

3-SFLL D3 – South Fork Lolo Creek

AGENCY	UNIT	RESPONSE AREA #	RESPONSE AREA NAME	FDRA	CENTER POINT
USFS	D3	3-SFLL	South Fork Lolo Creek	Lolo DNRC East	South Fork Lolo Creek Drainage N46° 38.3' x 114° 17.9'

DISPATCH RESPONSE LEVEL	LOW	MODERATE	HIGH
FIRE RESPONSE	Notify Duty Officer	Notify Duty Officer	Notify Duty Officer Prepare Kneeboard for Aircraft

RADIO GROUP	COMMAND	TAC	AIR-TO-AIR Zone	AIR-TO-GROUND Protection
Central Zone	Varies based on area	LNF Tac 3 <i>Mutual Aid: Red</i>	A/A 3: 126.0500	A/G 48: 167.8875

<p>SHARED BOUNDARY:</p> <ul style="list-style-type: none"> Bitterroot Interagency Dispatch Grangeville Interagency Dispatch
<p>MDC NOTIFICATIONS:</p> <ul style="list-style-type: none"> District Duty Officer Determine if Missoula County 911 has dispatched county fire resources Notify responding resources of county fire resources status If smoke report is within 5 nautical miles of Bitterroot Interagency Dispatch (BRC) boundary, notify BRC If smoke report is within 5 nautical miles of Grangeville Interagency Dispatch (GVC) boundary, notify GVC
<p>IF AIRCRAFT IS ORDERED:</p> <ul style="list-style-type: none"> Document any wilderness intrusions. South Fork Lolo Creek is in a retardant avoidance area Helicopter is recommended for best accessing this response area to insert ground personnel.
<p>KNOWN HAZARDS:</p> <ul style="list-style-type: none"> Potential delays in getting adequate emergency care because of the remoteness in this response area. Hikers/recreators in fire area with no quick routes of egress. 2017 Lolo Peak Fire scar Steep, rocky slopes with poor access.
<p>DUTY OFFICER CONSIDERATIONS:</p> <p><u>MAJOR VALUES</u></p> <ul style="list-style-type: none"> Selway-Bitterroot Wilderness FS trail system Wildlife habitat <p><u>OTHER CONSIDERATIONS</u></p> <ul style="list-style-type: none"> Determine if additional resources are necessary Make standard notifications Notify Missoula Recreation Program staff Notify Bitterroot Recreation Program staff as the administer South Fork Lolo Trail System If it is a human start, order an INV. If fire is human caused with criminal potential, order a USFS LEO. South Fork Lolo Creek is a retardant avoidance area. Lack of good safety zones in heavy timber with poor access. Adherence to wilderness protocols with fire suppression activities.

3-NOR1 D3 – Butler-Marshall

AGENCY	UNIT	RESPONSE AREA #	RESPONSE AREA NAME	FDRA	CENTER POINT
USFS	D3	3-NOR1	Butler-Marshall	Lolo DNRC East	Rattlesnake Trailhead N46° 55.6' x W113° 57.5'

DISPATCH RESPONSE LEVEL	LOW	MODERATE	HIGH
FIRE RESPONSE	Notify Duty Officer	Notify Duty Officer	Notify Duty Officer Prepare Kneeboard for Aircraft

RADIO GROUP	COMMAND	TAC	AIR-TO-AIR Zone	AIR-TO-GROUND Protection
Central Zone	FS Central Direct -OR- FS Mineral Peak	LNF Tac 3 <i>Mutual Aid: Red</i>	A/A 3: 126.0500	A/G 48: 167.8875

SHARED BOUNDARY:

- DNRC Missoula Unit (MSO)
- Missoula County (LG04)
- Confederated Salish & Kootenai Tribes (Flathead Agency)

MDC NOTIFICATIONS:

- District Duty Officer
- Determine if Missoula County 911 has dispatched county fire resources
- Notify responding resources of county fire resources status
- If smoke report is within 1 nautical mile of DNRC Missoula Unit (MSO), notify MSO Duty Officer
- If smoke report is within 1 nautical mile of CSKT protection, notify Ronan Dispatch

IF AIRCRAFT IS ORDERED:

- Powerline corridor thru south and west portions of response area

KNOWN HAZARDS:

- Potential delays in getting adequate emergency care.
- Hikers/recreators in fire area with no quick routes of egress.
- Powerline corridor thru south and west portions of response area.
- One-way vehicle ingress and egress in upper Grant Creek.

DUTY OFFICER CONSIDERATIONS:

MAJOR VALUES

- Point 6 and TV Mountain electronic sites.
- Residents and private property in Butler Creek, Grant Creek, and upper Rattlesnake Creek.
- Rattlesnake Creek watershed.
- Snowbowl ski resort.
- Mineral Peak Lookout.
- Rattlesnake National Recreation Area (RNRA) with wilderness portion too.
- Timber value in La Valle Creek, Butler Creek, Grant Creek, and Rattlesnake Creek.

OTHER CONSIDERATIONS

- Determine if additional resources are necessary
- Make standard notifications
- If it is a human start, order an INVF. If fire is human caused with criminal potential, order a USFS LEO.
- If fires are within road corridors, consider law enforcement presence for traffic control.

3-NOR2 D3 – Rattlesnake Wilderness

AGENCY	UNIT	RESPONSE AREA #	RESPONSE AREA NAME	FDRA	CENTER POINT
USFS	D3	3-NOR2	Rattlesnake Wilderness	Lolo DNRC East	Stuart Peak N47° 0.4' x W113° 55.2'

DISPATCH RESPONSE LEVEL	LOW	MODERATE	HIGH
FIRE RESPONSE	Notify Duty Officer	Notify Duty Officer	Notify Duty Officer Prepare Kneeboard for Aircraft

RADIO GROUP	COMMAND	TAC	AIR-TO-AIR Zone	AIR-TO-GROUND Protection
Central Zone	FS Central Direct -OR- FS Mineral Peak	LNF Tac 3 <i>Mutual Aid: Red</i>	A/A 3: 126.0500	A/G 48: 167.8875

SHARED BOUNDARY:

- DNRC Missoula Unit (MSO)
- Confederated Salish & Kootenai Tribes (CSKT – Flathead Agency)

MDC NOTIFICATIONS:

- District Duty Officer
- Determine if Missoula County 911 has dispatched county fire resources
- Notify responding resources of county fire resources status
- If smoke report is within 1 nautical mile of DNRC Missoula Unit (MSO), notify MSO Duty Officer
- If smoke report is within 1 nautical mile of CSKT, notify Ronan Dispatch Center

IF AIRCRAFT IS ORDERED:

- Document any wilderness intrusions.

KNOWN HAZARDS:

- Potential delays in getting adequate emergency care.
- Hikers/recreators in fire area with no quick routes of egress.

DUTY OFFICER CONSIDERATIONS:

MAJOR VALUES

- Resources and recreation opportunities associated with Rattlesnake National Recreation Area Wilderness (RNRAW).
- Point 6 electronic site
- Mineral Peak Lookout

OTHER CONSIDERATIONS

- Determine if additional resources are necessary
- Make standard notifications
- If it is a human start, order an INV. If fire is human caused with criminal potential, order a USFS LEO.

3-SOU1 D3 – Pattee Canyon

AGENCY	UNIT	RESPONSE AREA #	RESPONSE AREA NAME	FDRA	CENTER POINT
USFS	D3	3-SOU1	Pattee Canyon	Lolo DNRC East	Crazy Canyon Trailhead N46° 49.5' x W113° 56.3'

DISPATCH RESPONSE LEVEL	LOW	MODERATE	HIGH
FIRE RESPONSE	Notify Duty Officer	Notify Duty Officer	Notify Duty Officer Prepare Kneeboard for Aircraft

RADIO GROUP	COMMAND	TAC	AIR-TO-AIR Zone	AIR-TO-GROUND Protection
Central Zone	FS Central Direct -OR- FS University	LNF Tac 3 <i>Mutual Aid: Red</i>	A/A 3: 126.0500	A/G 48: 167.8875

<p>SHARED BOUNDARY:</p> <ul style="list-style-type: none"> • DNRC Missoula Unit (MSO) • Missoula County (LG04)
<p>MDC NOTIFICATIONS:</p> <ul style="list-style-type: none"> • District Duty Officer • Determine if Missoula County 911 has dispatched county fire resources • Notify responding resources of county fire resources status • If smoke report is within 1 nautical mile of DNRC Missoula Unit (MSO), notify MSO Duty Officer
<p>IF AIRCRAFT IS ORDERED:</p> <ul style="list-style-type: none"> •
<p>KNOWN HAZARDS:</p> <ul style="list-style-type: none"> • BPA powerlines in lower Deer Creek. • Residents and private property in Pattee Canyon and Deer Creek. • Electronic sites on University Mountain and Miller Peak. • Transient settlement camps, especially north side of University Mtn, above Kim Williams trail. • Underground gas line that runs east and west, approx. 400 yards north of Pattee Canyon Picnic Area. • Very popular multi-use recreation areas in Crazy Canyon and Pattee Canyon. • Hikers/recreators in fire area with no quick routes of egress.
<p>DUTY OFFICER CONSIDERATIONS:</p> <p><u>MAJOR VALUES</u></p> <ul style="list-style-type: none"> • I-90 corridor • Residents in Deer Creek, Pattee Canyon, and along I90 corridor. • BPA powerline and corridor. • Electronic sites on Miller Peak and University Mtn. • Pattee Canyon and Crazy Canyon recreation areas. <p><u>OTHER CONSIDERATIONS</u></p> <ul style="list-style-type: none"> • Determine if additional resources are necessary • Make standard notifications • If it is a human start, order an INV. If fire is human caused with criminal potential, order a USFS LEO. • Missoula Ranger District Rec Staff if fire is located within Pattee Canyon and Crazy Canyon recreation areas, • If fires are within road corridors, consider law enforcement presence for traffic control. • Law enforcement presence recommended for all fires on north side of University Mountain

3-SOU2 D3 – Miller-Swartz

AGENCY	UNIT	RESPONSE AREA #	RESPONSE AREA NAME	FDRA	CENTER POINT
USFS	D3	3-SOU2	Miller-Swartz	Lolo DNRC East	Holloman Saddle 6° 43.6' x W113° 50.9'

DISPATCH RESPONSE LEVEL	LOW	MODERATE	HIGH
FIRE RESPONSE	Notify Duty Officer	Notify Duty Officer	Notify Duty Officer Prepare Kneeboard for Aircraft

RADIO GROUP	COMMAND	TAC	AIR-TO-AIR Zone	AIR-TO-GROUND Protection
Central Zone	DNRC Miller Peak -OR- FS Central Direct	LNF Tac 3 <i>Mutual Aid: Red</i>	A/A 3: 126.0500	A/G 48: 167.8875

<p>SHARED BOUNDARY:</p> <ul style="list-style-type: none"> Missoula County (LG04) DNRC Missoula Unit (MSO) Bitterroot Interagency Dispatch
<p>MDC NOTIFICATIONS:</p> <ul style="list-style-type: none"> District Duty Officer Determine if Missoula County 911 has dispatched county fire resources Notify responding resources of county fire resources status If smoke report is within 1 nautical mile of DNRC Missoula Unit (MSO), notify MSO Duty Officer If smoke report is within 5 nautical miles of Bitterroot Interagency Dispatch (BRC) boundary, notify BRC
<p>IF AIRCRAFT IS ORDERED:</p> <ul style="list-style-type: none">
<p>KNOWN HAZARDS:</p> <ul style="list-style-type: none"> Suppressing fire near or under BPA power lines. Potential for vehicle traffic on Rock Creek Road during summer months. Road is very tight for engines and other large trucks in certain areas. Old private timber company connector roads from Deer/Bear Saddle to Holloman Saddle may require some brushing and kicking of rocks. History of illegal shooting in the Plant Creek drainage on the SW corner of the response area.
<p>DUTY OFFICER CONSIDERATIONS:</p> <p><u>MAJOR VALUES</u></p> <ul style="list-style-type: none"> I-90 corridor Resident in Upper Miller Creek, Lower Rock Creek, and along I-90 corridor. BPA Powerline and corridor. Electronic sites on Miller Peak. Timber values in Allen Creek, Greenough Creek, Swartz Creek, Gilbert Creek, and Moccasin Creek. Forest Service recreation trail corridors. <p><u>OTHER CONSIDERATIONS</u></p> <ul style="list-style-type: none"> Determine if additional resources are necessary Make standard notifications If it is a human start, order an INVF. If fire is human caused with criminal potential, order a USFS LEO.

3-SOU3 D3 – Beavertail South

AGENCY	UNIT	RESPONSE AREA #	RESPONSE AREA NAME	FDRA	CENTER POINT
USFS	D3	3-SOU3	Beavertail-South	Lolo DNRC East	Beavertail Exit N46° 43.5' x W113° 34.5'

DISPATCH RESPONSE LEVEL	LOW	MODERATE	HIGH
FIRE RESPONSE	Notify Duty Officer	Notify Duty Officer	Notify Duty Officer Prepare Kneeboard for Aircraft

RADIO GROUP	COMMAND	TAC	AIR-TO-AIR Zone	AIR-TO-GROUND Protection
Central Zone	FS Central Direct -OR- FS University	LNF Tac 3 <i>Mutual Aid: Red</i>	A/A 3: 126.0500	A/G 48: 167.8875

SHARED BOUNDARY:

- DNRC Missoula Unit (MSO)
- Dillon Interagency Dispatch

MDC NOTIFICATIONS:

- District Duty Officer
- Determine if Missoula -OR- Granite County 911 has dispatched county fire resources
- Notify responding resources of county fire resources status
- If smoke report is within 1 nautical mile of DNRC Missoula Unit (MSO), notify MSO Duty Officer
- If smoke report is within 5 nautical miles of Dillon Interagency Dispatch (DDC) boundary, notify DDC

IF AIRCRAFT IS ORDERED:

- BPA power lines

KNOWN HAZARDS:

- BPA power lines
- Vehicle traffic on Rock Creek Road during summer months. Road can be tight for engines and other large trucks
- Do not recommend engine access beyond Brewster Creek/Edelman Creek Road junction before heading up to Sliderock area. Pick-up truck or UTV only.

DUTY OFFICER CONSIDERATIONS:

MAJOR VALUES

- I-90 corridor
- Residents in Brewster Creek Subdivision, Sliderock, and along I-90 corridor
- BPA Powerline and corridor.
- Private property and residences along lower Rock Creek corridor.
- Timber values in Kitchen Gulch and travel corridors between Welch-Gillespie Saddle and Brewster-Tyler Saddle.
- Forest Service recreation trail corridors

OTHER CONSIDERATIONS

- Determine if additional resources are necessary
- Make standard notifications
- If it is a human start, order an INVF. If fire is human caused with criminal potential, order a USFS LEO.

3-SOU4 D3 – Welcome Creek Wilderness

AGENCY	UNIT	RESPONSE AREA #	RESPONSE AREA NAME	FDRA	CENTER POINT
USFS	D3	3-SOU4	Welcome Creek Wilderness	Lolo DNRC East	Cleveland Mountain N46° 36.9' x W113° 48.9'

DISPATCH RESPONSE LEVEL	LOW	MODERATE	HIGH
FIRE RESPONSE	Notify Duty Officer	Notify Duty Officer	Notify Duty Officer Prepare Kneeboard for Aircraft

RADIO GROUP	COMMAND	TAC	AIR-TO-AIR Zone	AIR-TO-GROUND Protection
Central Zone	FS Quigg -OR- FS Mineral	LNF Tac 3 <i>Mutual Aid: Red</i>	A/A 3: 126.0500	A/G 48: 167.8875

<p>SHARED BOUNDARY:</p> <ul style="list-style-type: none"> • DNRC Missoula Unit (MSO) • Bitterroot Interagency Dispatch
<p>MDC NOTIFICATIONS:</p> <ul style="list-style-type: none"> • District Duty Officer • Determine if Granite County 911 has dispatched county fire resources • Notify responding resources of county fire resources status • If smoke report is within 1 nautical mile of DNRC Missoula Unit (MSO), notify MSO Duty Officer • If smoke report is within 5 nautical miles of Bitterroot Interagency Dispatch (BRC) boundary, notify BRC
<p>IF AIRCRAFT IS ORDERED:</p> <ul style="list-style-type: none"> • Document any wilderness intrusions
<p>KNOWN HAZARDS:</p> <ul style="list-style-type: none"> • If crossing Rock Creek, the creek crossing is a hazard unless you are using a bridge. • Potential for vehicle traffic on Rock Creek Road during summer months. Road is very tight for engines and other large trucks in certain areas.
<p>DUTY OFFICER CONSIDERATIONS:</p> <p><u>MAJOR VALUES</u></p> <ul style="list-style-type: none"> • Brewster Creek subdivision. • Trout Haven subdivision. • Ranch Creek homeowners. • Private property and residences along Rock Creek corridor. • Forest Service campgrounds, dispersed camp sites, and occupants. • Forest Service portable RAWS site (Cinnabar Point area). • Forest Service recreation trail corridors. <p><u>OTHER CONSIDERATIONS</u></p> <ul style="list-style-type: none"> • Determine if additional resources are necessary • Make standard notifications • If it is a human start, order an INV. If fire is human caused with criminal potential, order a USFS LEO.

3-SOU5 D3 – Rock Creek West

AGENCY	UNIT	RESPONSE AREA #	RESPONSE AREA NAME	FDRA	CENTER POINT
USFS	D3	3-SOU5	Rock Creek West	Lolo DNRC East	Ambrose Saddle N46° 31.0' x W113° 50.9'

DISPATCH RESPONSE LEVEL	LOW	MODERATE	HIGH
FIRE RESPONSE	Notify Duty Officer	Notify Duty Officer	Notify Duty Officer Prepare Kneeboard for Aircraft

RADIO GROUP	COMMAND	TAC	AIR-TO-AIR Zone	AIR-TO-GROUND Protection
Central Zone	FS Quigg	LNF Tac 3 <i>Mutual Aid: Red</i>	A/A 3: 126.0500	A/G 48: 167.8875

<p>SHARED BOUNDARY:</p> <ul style="list-style-type: none"> Bitterroot Interagency Dispatch Dillon Interagency Dispatch
<p>MDC NOTIFICATIONS:</p> <ul style="list-style-type: none"> District Duty Officer Determine if Granite County 911 has dispatched county fire resources Notify responding resources of county fire resources status If smoke report is within 5 nautical miles of Bitterroot Interagency Dispatch (BRC) boundary, notify BRC If smoke report is within 5 nautical miles of Dillon Interagency Dispatch (DDC) boundary, notify DDC
<p>IF AIRCRAFT IS ORDERED:</p> <ul style="list-style-type: none">
<p>KNOWN HAZARDS:</p> <ul style="list-style-type: none"> If crossing Rock Creek, the creek crossing is a hazard unless you are using a bridge. Potential for vehicle traffic on Rock Creek Road during summer months. Road is very tight for engines and other large trucks in certain areas.
<p>DUTY OFFICER CONSIDERATIONS:</p> <p><u>MAJOR VALUES</u></p> <ul style="list-style-type: none"> Trouthaven subdivision. Miller Flat subdivision. Williams Gulch subdivision. Private property and residences along Rock Creek corridor. Forest Service historic cabins (Rock Creek Cabin, Hogback Cabin, Morgan Case). Forest Service campgrounds, dispersed camp sites, and occupants. Forest Service portable RAWS site (Cinnabar Point area). Forest Service recreation trail corridors (especially Easthouse National Rec. trail #313). Welcome Creek Wilderness considerations. <p><u>OTHER CONSIDERATIONS</u></p> <ul style="list-style-type: none"> Determine if additional resources are necessary Make standard notifications If it is a human start, order an INV. If fire is human caused with criminal potential, order a USFS LEO.

3-SOU6 D3 – Rock Creek East

AGENCY	UNIT	RESPONSE AREA #	RESPONSE AREA NAME	FDRA	CENTER POINT
USFS	D3	3-SOU6	Rock Creek East	Lolo DNRC East	Ranch Creek N46° 34.8' x W113° 40.2'

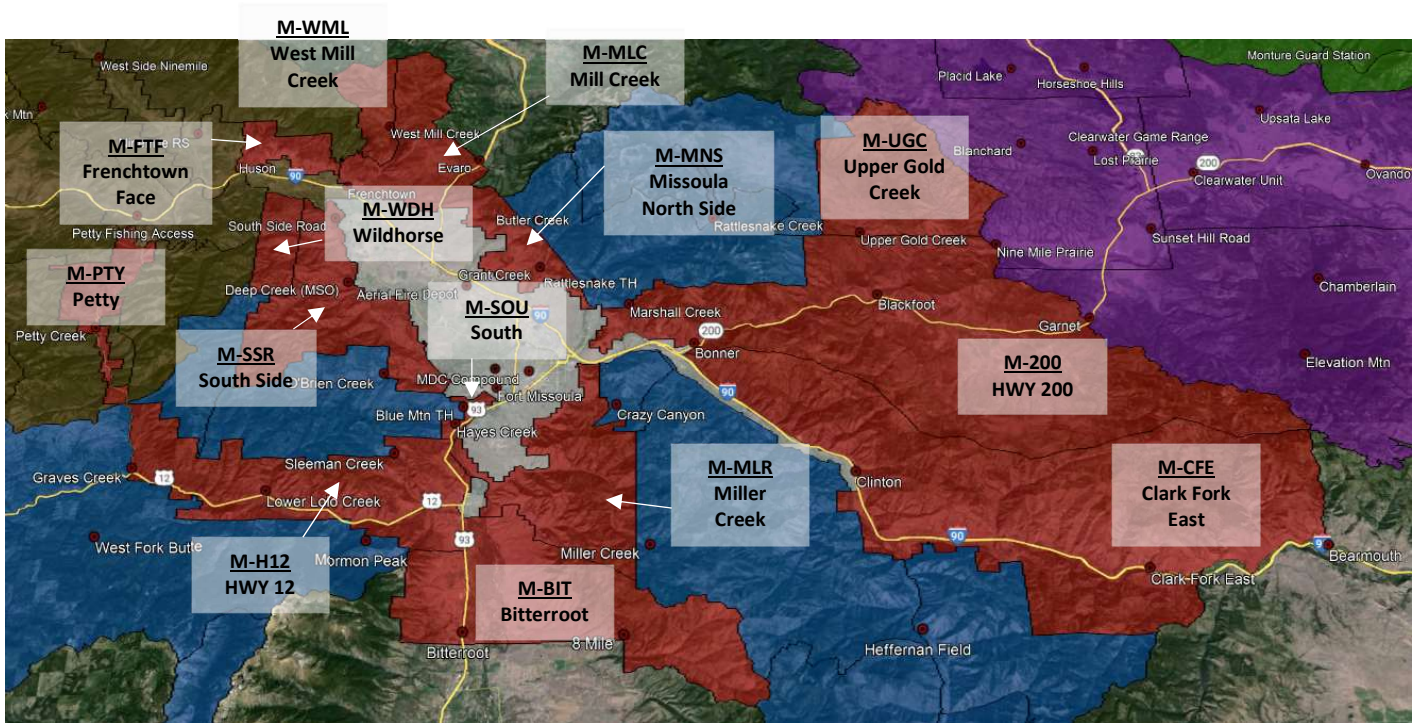
DISPATCH RESPONSE LEVEL	LOW	MODERATE	HIGH
FIRE RESPONSE	Notify Duty Officer	Notify Duty Officer	Notify Duty Officer Prepare Kneeboard for Aircraft

RADIO GROUP	COMMAND	TAC	AIR-TO-AIR Zone	AIR-TO-GROUND Protection
Central Zone	FS Quigg	LNF Tac 3 <i>Mutual Aid: Red</i>	A/A 3: 126.0500	A/G 48: 167.8875

<p>SHARED BOUNDARY:</p> <ul style="list-style-type: none"> Dillon Interagency Dispatch
<p>MDC NOTIFICATIONS:</p> <ul style="list-style-type: none"> District Duty Officer Determine if Granite County 911 has dispatched county fire resources Notify responding resources of county fire resources status If smoke report is within 5 nautical miles of Dillon Interagency Dispatch (DDC) boundary, notify DDC
<p>IF AIRCRAFT IS ORDERED:</p> <ul style="list-style-type: none">
<p>KNOWN HAZARDS:</p> <ul style="list-style-type: none"> If crossing Rock Creek, the creek crossing is a hazard unless you are using a bridge. Potential for vehicle traffic on Rock Creek Road during summer months. Road is very tight for engines and other large trucks in certain areas. Do not recommend engine access beyond Brewster Creek/Edelman Creek Road junction before heading up to Sliderock area. Pick-up truck or UTC only.
<p>DUTY OFFICER CONSIDERATIONS:</p> <p><u>MAJOR VALUES</u></p> <ul style="list-style-type: none"> Brewster Creek subdivision (Sliderock residents included). Trouthaven subdivision. Miller Flat subdivision. Williams Gulch subdivision. Ranch Creek homeowners. Private property and residences along Rock Creek corridor. Forest Service historic cabins (Rock Creek Cabin, Hogback Cabin, Morgan Case). Forest Service campgrounds, dispersed camp sites, and occupants. Forest Service repeater site (Quigg Peak). Brewster Creek private mining claims. Forest Service recreation trail corridors. <p><u>OTHER CONSIDERATIONS</u></p> <ul style="list-style-type: none"> Determine if additional resources are necessary Make standard notifications If it is a human start, order an INVF. If fire is human caused with criminal potential, order a USFS LEO.

Central Zone – Missoula Unit (MSO)

DNRC Southwest Land Office



M-PTY MSO – Petty

AGENCY	UNIT	RESPONSE AREA #	RESPONSE AREA NAME	FDRA	CENTER POINT
DNRC	MSO	M-PTY	Petty	Lolo DNRC East	South Fork Petty N46° 50.9' x W114° 26.2'

DISPATCH RESPONSE LEVEL	LOW	MODERATE	HIGH
FIRE RESPONSE	1 Engine	1 Engine	2 Engines Place DNRC Helicopter on Standby

RADIO GROUP	COMMAND	TAC	AIR-TO-AIR <i>Zone</i>	AIR-TO-GROUND <i>Protection</i>
Central Zone	FS Stark -OR- FS White	DNRC Tac <i>Mutual Aid: Red</i>	A/A 3: 126.0500	A/G Yellow: 151.2200

<p>SHARED BOUNDARY:</p> <ul style="list-style-type: none"> • Ninemile Ranger District (D4) • Missoula Ranger District (D3)
<p>MDC NOTIFICATIONS:</p> <ul style="list-style-type: none"> • Unit Duty Officer • Determine if Missoula County 911 has dispatched county fire resources • Notify responding resources of county fire resources status • If smoke report is within 1 nautical mile of Missoula Ranger District (D3), notify D3 Duty Officer • If smoke report is within 1 nautical mile of Ninemile Ranger District (D4), notify D4 Duty Officer
<p>IF AIRCRAFT IS ORDERED:</p> <ul style="list-style-type: none"> • If requested, dispatch DNRC helicopter first, if available. If no State helicopter is available, dispatch closest available helicopter.
<p>KNOWN HAZARDS:</p> <ul style="list-style-type: none"> • Unknown
<p>DUTY OFFICER CONSIDERATIONS:</p> <ul style="list-style-type: none"> • Determine if additional resources are necessary. • Make standard notifications.

M-H12 MSO – HWY 12

AGENCY	UNIT	RESPONSE AREA #	RESPONSE AREA NAME	FDRA	CENTER POINT
DNRC	MSO	M-H12	Highway 12	Lolo DNRC East	Woodman N46° 45.6' x W114 15.1'

DISPATCH RESPONSE LEVEL	LOW	MODERATE	HIGH
FIRE RESPONSE	1 Engine	1 Engine	2 Engines Prepare Kneeboard for Aircraft

RADIO GROUP	COMMAND	TAC	AIR-TO-AIR <i>Zone</i>	AIR-TO-GROUND <i>Protection</i>
Central Zone	DNRC Miller	DNRC Tac <i>Mutual Aid: Red</i>	A/A 3: 126.0500	A/G Yellow: 151.2200

<p>SHARED BOUNDARY:</p> <ul style="list-style-type: none"> • Missoula Ranger District (D3) • Ninemile Ranger District (D4) • Missoula County (LG04) • Bitterroot Interagency Dispatch
<p>MDC NOTIFICATIONS:</p> <ul style="list-style-type: none"> • Unit Duty Officer • Determine if Missoula County 911 has dispatched county fire resources • Notify responding resources of county fire resources status • If smoke report is within 1 nautical mile of Missoula Ranger District (D3), notify D3 Duty Officer • If smoke report is within 1 nautical mile of Ninemile Ranger District (D4), notify D4 Duty Officer • If smoke report is within 5 nautical miles of Bitterroot Interagency Dispatch (BRC) boundary, notify BRC
<p>IF AIRCRAFT IS ORDERED:</p> <ul style="list-style-type: none"> • Dispatch State helicopter first, if available. If no State helicopter is available, dispatch closest available helicopter.
<p>KNOWN HAZARDS:</p> <ul style="list-style-type: none"> • WUI • Highway 12 traffic
<p>DUTY OFFICER CONSIDERATIONS:</p> <ul style="list-style-type: none"> • Determine if additional resources are necessary. • Make standard notifications.

M-SSR MSO – South Side

AGENCY	UNIT	RESPONSE AREA #	RESPONSE AREA NAME	FDRA	CENTER POINT
DNRC	MSO	M-SSR	South Side	Lolo DNRC East	Harper's Bridge N46° 55.9' x W114° 12.6'

DISPATCH RESPONSE LEVEL	LOW	MODERATE	HIGH
FIRE RESPONSE	1 Engine	1 Engine	2 Engines Place DNRC Helicopter on Standby

RADIO GROUP	COMMAND	TAC	AIR-TO-AIR <i>Zone</i>	AIR-TO-GROUND <i>Protection</i>
Central Zone	DNRC Blue	DNRC Tac <i>Mutual Aid: Red</i>	A/A 3: 126.0500	A/G Yellow: 151.2200

<p>SHARED BOUNDARY:</p> <ul style="list-style-type: none"> • Missoula Ranger District (D3) • Missoula County (LG04)
<p>MDC NOTIFICATIONS:</p> <ul style="list-style-type: none"> • Unit Duty Officer • Determine if Missoula County 911 has dispatched county fire resources • Notify responding resources of county fire resources status • If smoke report is within 1 nautical mile of Missoula Ranger District (D3), notify D3 Duty Officer
<p>IF AIRCRAFT IS ORDERED:</p> <ul style="list-style-type: none"> • Dispatch State helicopter first, if available. If no State helicopter is available, dispatch closest available helicopter.
<p>KNOWN HAZARDS:</p> <ul style="list-style-type: none"> • BPA Powerlines • Transient population and encampments
<p>DUTY OFFICER CONSIDERATIONS:</p> <ul style="list-style-type: none"> • Determine if additional resources are necessary. • Make standard notifications.

M-WDH MSO – Wildhorse

AGENCY	UNIT	RESPONSE AREA #	RESPONSE AREA NAME	FDRA	CENTER POINT
DNRC	MSO	M-WDH	Wildhorse	Lolo DNRC East	Rock Creek Road N46° 58.0' x W114° 17.1'

DISPATCH RESPONSE LEVEL	LOW	MODERATE	HIGH
FIRE RESPONSE	1 Engine	1 Engine	2 Engines

RADIO GROUP	COMMAND	TAC	AIR-TO-AIR Zone	AIR-TO-GROUND Protection
Central Zone	DNRC Blue	DNRC Tac <i>Mutual Aid: Red</i>	A/A 3: 126.0500	A/G Yellow: 151.2200

SHARED BOUNDARY:

- Missoula Ranger District (D3)
- Ninemile Ranger District (D4)
- Missoula County (LG04)

MDC NOTIFICATIONS:

- Unit Duty Officer
- Determine if Missoula County 911 has dispatched county fire resources
- Notify responding resources of county fire resources status
- If smoke report is within 1 nautical mile of Missoula Ranger District (D3), notify D3 Duty Officer
- If smoke report is within 1 nautical mile of Ninemile Ranger District (D4), notify D4 Duty Officer
- If smoke report is within 5 nautical miles of Bitterroot Interagency Dispatch (BRC) boundary, notify BRC

IF AIRCRAFT IS ORDERED:

- Dispatch State helicopter first, if available. If no State helicopter is available, dispatch closest available helicopter.

KNOWN HAZARDS:

- BPA Powerlines

NOTIFICATIONS:

- Unit Duty Officer
- If the smoke report is within 1 nautical mile of district/unit boundary, notify the appropriate Duty Officer

DUTY OFFICER CONSIDERATIONS:

- Determine if additional resources are necessary.
- Make standard notifications.

M-FTF MSO – Frenchtown Face

AGENCY	UNIT	RESPONSE AREA #	RESPONSE AREA NAME	FDRA	CENTER POINT
DNRC	MSO	M-FTF	Frenchtown Face	Lolo DNRC East	Houle Creek Road N47° 3.1' x W114° 17.6'

DISPATCH RESPONSE LEVEL	LOW	MODERATE	HIGH
FIRE RESPONSE	1 Engine	1 Engine	2 Engines Place DNRC Helicopter on Standby

RADIO GROUP	COMMAND	TAC	AIR-TO-AIR <i>Zone</i>	AIR-TO-GROUND <i>Protection</i>
Central Zone	DNRC Blue	DNRC Tac <i>Mutual Aid: Red</i>	A/A 3: 126.0500	A/G Yellow: 151.2200

<p>SHARED BOUNDARY:</p> <ul style="list-style-type: none"> • Ninemile Ranger District (D4) • Missoula County (LG04)
<p>MDC NOTIFICATIONS:</p> <ul style="list-style-type: none"> • Unit Duty Officer • Determine if Missoula County 911 has dispatched county fire resources • Notify responding resources of county fire resources status • If smoke report is within 1 nautical mile of Ninemile Ranger District (D4), notify D4 Duty Officer
<p>IF AIRCRAFT IS ORDERED:</p> <ul style="list-style-type: none"> • Dispatch State helicopter first, if available. If no State helicopter is available, dispatch closest available helicopter.
<p>KNOWN HAZARDS:</p> <ul style="list-style-type: none"> • WUI
<p>DUTY OFFICER CONSIDERATIONS:</p> <ul style="list-style-type: none"> • Determine if additional resources are necessary • Make standard notifications

M-WML MSO – West Mill Creek

AGENCY	UNIT	RESPONSE AREA #	RESPONSE AREA NAME	FDRA	CENTER POINT
DNRC	MSO	M-WML	West Mill Creek	Lolo DNRC East	Spring Creek N47° 4.1' x W114° 11.2'

DISPATCH RESPONSE LEVEL	LOW	MODERATE	HIGH
FIRE RESPONSE	1 Engine	1 Engine	2 Engines

RADIO GROUP	COMMAND	TAC	AIR-TO-AIR Zone	AIR-TO-GROUND Protection
Central Zone	DNRC Blue	DNRC Tac <i>Mutual Aid: Red</i>	A/A 3: 126.0500	A/G Yellow: 151.2200

SHARED BOUNDARY:

- Ninemile Ranger District (D4)
- Confederated Salish and Kootenai Tribes (CSKT - Flathead Agency)

MDC NOTIFICATIONS:

- Unit Duty Officer
- Determine if Missoula County 911 has dispatched county fire resources
- Notify responding resources of county fire resources status
- If smoke report is within 1 nautical mile of Ninemile Ranger District (D4), notify D4 Duty Officer
- If smoke report is within 1 nautical mile of CSKT boundary, notify Ronan Dispatch

IF AIRCRAFT IS ORDERED:

- Dispatch State helicopter first, if available. If no State helicopter is available, dispatch closest available helicopter.

KNOWN HAZARDS:

- Remote area

DUTY OFFICER CONSIDERATIONS:

- Determine if additional resources are necessary.
- Make standard notifications.

M-MLC MSO – Mill Creek

AGENCY	UNIT	RESPONSE AREA #	RESPONSE AREA NAME	FDRA	CENTER POINT
DNRC	MSO	M-MLC	Mill Creek	Lolo DNRC East	Spring Hill Road N47° 1.2' x W114° 12.2'

DISPATCH RESPONSE LEVEL	LOW	MODERATE	HIGH
FIRE RESPONSE	1 Engine	1 Engine	2 Engines Place DNRC Helicopter on Standby

RADIO GROUP	COMMAND	TAC	AIR-TO-AIR <i>Zone</i>	AIR-TO-GROUND <i>Protection</i>
Central Zone	DNRC Blue	DNRC Tac <i>Mutual Aid: Red</i>	A/A 3: 126.0500	A/G Yellow: 151.2200

<p>SHARED BOUNDARY:</p> <ul style="list-style-type: none"> • Ninemile Ranger District (D4) • Missoula County (LG04) • Confederated Salish and Kootenai Tribes (CSKT, Flathead Agency)
<p>MDC NOTIFICATIONS:</p> <ul style="list-style-type: none"> • Unit Duty Officer • Determine if Missoula County 911 has dispatched county fire resources • Notify responding resources of county fire resources status • If smoke report is within 1 nautical mile of Missoula Ranger District (D3), notify D3 Duty Officer • If smoke report is within 1 nautical mile of Ninemile Ranger District (D4), notify D4 Duty Officer • If smoke report is within 1 nautical mile of CSKT boundary, notify Ronan Dispatch
<p>IF AIRCRAFT IS ORDERED:</p> <ul style="list-style-type: none"> • Dispatch State helicopter first, if available. If no State helicopter is available, dispatch closest available helicopter.
<p>KNOWN HAZARDS:</p> <ul style="list-style-type: none"> • WUI
<p>DUTY OFFICER CONSIDERATIONS:</p> <ul style="list-style-type: none"> • Determine if additional resources are necessary. • Make standard notifications

M-MNS MSO – Missoula North Side

AGENCY	UNIT	RESPONSE AREA #	RESPONSE AREA NAME	FDRA	CENTER POINT
DNRC	MSO	M-MNS	Missoula North Side	Lolo DNRC East	Butler Creek Road N46° 57.2° x W114° 4.8'

DISPATCH RESPONSE LEVEL	LOW	MODERATE	HIGH
FIRE RESPONSE	1 Engine	1 Engine	2 Engines Place DNRC Helicopter on Standby

RADIO GROUP	COMMAND	TAC	AIR-TO-AIR <i>Zone</i>	AIR-TO-GROUND <i>Protection</i>
Central Zone	DNRC Blue -OR- DNRC Miller	DNRC Tac <i>Mutual Aid: Red</i>	A/A 3: 126.0500	A/G Yellow: 151.2200

<p>SHARED BOUNDARY:</p> <ul style="list-style-type: none"> • Missoula Ranger District (D3) • Missoula County (LG04) • Confederated Salish and Kootenai Tribes (CSKT - Flathead Agency)
<p>MDC NOTIFICATIONS:</p> <ul style="list-style-type: none"> • Unit Duty Officer • Determine if Missoula County 911 has dispatched county fire resources • Notify responding resources of county fire resources status • If smoke report is within 1 nautical mile of Missoula Ranger District (D3), notify D3 Duty Officer • If smoke report is within 1 nautical mile of CSKT boundary, notify Ronan Dispatch
<p>IF AIRCRAFT IS ORDERED:</p> <ul style="list-style-type: none"> • Dispatch State helicopter first, if available. If no State helicopter is available, dispatch closest available helicopter.
<p>KNOWN HAZARDS:</p> <ul style="list-style-type: none"> • Unknown
<p>DUTY OFFICER CONSIDERATIONS:</p> <ul style="list-style-type: none"> • Determine if additional resources are necessary. • Make standard notifications.

M-SOU MSO – South (Hayes Creek)

AGENCY	UNIT	RESPONSE AREA #	RESPONSE AREA NAME	FDRA	CENTER POINT
DNRC	MSO	M-SOU	South	Lolo DNRC East	Hayes Creek N46° 48.8' x W114° 5.6'

DISPATCH RESPONSE LEVEL	LOW	MODERATE	HIGH
FIRE RESPONSE	1 Engine	1 Engine	2 Engines Place DNRC Helicopter on Standby

RADIO GROUP	COMMAND	TAC	AIR-TO-AIR Zone	AIR-TO-GROUND Protection
Central Zone	DNRC Blue	DNRC Tac <i>Mutual Aid: Red</i>	A/A 3: 126.0500	A/G Yellow: 151.2200

<p>SHARED BOUNDARY:</p> <ul style="list-style-type: none"> Missoula Ranger District (D3) Missoula County (LG04)
<p>MDC NOTIFICATIONS:</p> <ul style="list-style-type: none"> Unit Duty Officer Determine if Missoula County 911 has dispatched county fire resources Notify responding resources of county fire resources status If smoke report is within 1 nautical mile of Missoula Ranger District (D3), notify D3 Duty Officer
<p>IF AIRCRAFT IS ORDERED:</p> <ul style="list-style-type: none"> Dispatch State helicopter first, if available. If no SWLO State helicopter is available, dispatch closest available helicopter.
<p>KNOWN HAZARDS:</p> <ul style="list-style-type: none"> BPA Powerlines
<p>DUTY OFFICER CONSIDERATIONS:</p> <ul style="list-style-type: none"> Determine if additional resources are necessary Make standard notifications

M-MLR MSO – Miller Creek

AGENCY	UNIT	RESPONSE AREA #	RESPONSE AREA NAME	FDRA	CENTER POINT
DNRC	MSO	M-MLR	Miller Creek	Lolo DNRC East	Bear Run N46° 46.5' x W113° 57.0

DISPATCH RESPONSE LEVEL	LOW	MODERATE	HIGH
FIRE RESPONSE	1 Engine	1 Engine	2 Engines Place DNRC Helicopter on Standby

RADIO GROUP	COMMAND	TAC	AIR-TO-AIR Zone	AIR-TO-GROUND Protection
Central Zone	DNRC Blue -OR- DNRC Miller	DNRC Tac <i>Mutual Aid: Red</i>	A/A 3: 126.0500	A/G Yellow: 151.2200

<p>SHARED BOUNDARY:</p> <ul style="list-style-type: none"> • Missoula Ranger District (D3) • Missoula County (LG04)
<p>MDC NOTIFICATIONS:</p> <ul style="list-style-type: none"> • Unit Duty Officer • Determine if Missoula County 911 has dispatched county fire resources • Notify responding resources of county fire resources status • If smoke report is within 1 nautical mile of Missoula Ranger District (D3), notify D3 Duty Officer
<p>IF AIRCRAFT IS ORDERED:</p> <ul style="list-style-type: none"> • Dispatch State helicopter first, if available. If no SWLO State helicopter is available, dispatch closest available helicopter.
<p>KNOWN HAZARDS:</p> <ul style="list-style-type: none"> • BPA Powerlines
<p>DUTY OFFICER CONSIDERATIONS:</p> <ul style="list-style-type: none"> • Determine if additional resources are necessary • Make standard notifications

M-BIT MSO – Bitterroot

AGENCY	UNIT	RESPONSE AREA #	RESPONSE AREA NAME	FDRA	CENTER POINT
DNRC	MSO	M-BIT	Bitterroot	Lolo DNRC East	Baldy Mountain N46° 42.5' x W113° 58.8'

DISPATCH RESPONSE LEVEL	LOW	MODERATE	HIGH
FIRE RESPONSE	1 Engine	1 Engine	2 Engines Place DNRC Helicopter on Standby

RADIO GROUP	COMMAND	TAC	AIR-TO-AIR Zone	AIR-TO-GROUND Protection
Central Zone	DNRC Miller	DNRC Tac <i>Mutual Aid: Red</i>	A/A 3: 126.0500	A/G Yellow: 151.2200

SHARED BOUNDARY:

- Missoula Ranger District (D3)
- Missoula County (LG04)
- Bitterroot Interagency Dispatch

MDC NOTIFICATIONS:

- Unit Duty Officer
- Determine if Missoula County 911 has dispatched county fire resources
- Notify responding resources of county fire resources status
- If smoke report is within 1 nautical mile of Missoula Ranger District (D3), notify D3 Duty Officer
- If smoke report is within 5 nautical miles of Bitterroot Interagency Dispatch (BRC) boundary, notify BRC

IF AIRCRAFT IS ORDERED:

- Dispatch State helicopter first, if available. If no State helicopter is available, dispatch closest available helicopter.

KNOWN HAZARDS:

- BPA Powerlines

DUTY OFFICER CONSIDERATIONS:

- Determine if additional resources are necessary
- Make standard notifications
- Response Area contains county protection
- West of Highway 93 contains county fire response
- East of the Bitterroot River has limited, if any, county fire response
- DNRC will more that likely respond to all fires in this response area, regardless of protection

M-CFE MSO – Clark Fork East

AGENCY	UNIT	RESPONSE AREA #	RESPONSE AREA NAME	FDRA	CENTER POINT
DNRC	MSO	M-CFE	Clark Fork East	Lolo DNRC East	Beavertail N46° 43.5' x W113° 34.5'

DISPATCH RESPONSE LEVEL	LOW	MODERATE	HIGH
FIRE RESPONSE	1 Engine	1 Engine	2 Engines Place DNRC Helicopter on Standby

RADIO GROUP	COMMAND	TAC	AIR-TO-AIR Zone	AIR-TO-GROUND Protection
Central Zone	DNRC Union	DNRC Tac <i>Mutual Aid: Red</i>	A/A 3: 126.0500	A/G Yellow: 151.2200

SHARED BOUNDARY:

- Missoula Ranger District (D3)
- Clearwater Unit (CLW)
- Missoula County (LG04)
- Dillon Interagency Dispatch

MDC NOTIFICATIONS:

- Unit Duty Officer
- Determine if Missoula County 911 has dispatched county fire resources
- Notify responding resources of county fire resources status
- If smoke report is within 1 nautical mile of Missoula Ranger District (D3), notify D3 Duty Officer
- If smoke report is within 1 nautical mile of Clearwater Unit (CLW), notify CLW Duty Officer
- If smoke report is within 5 nautical miles of Dillon Interagency Dispatch (DDC) boundary, notify DDC

IF AIRCRAFT IS ORDERED:

- Dispatch State helicopter first, if available. If no State helicopter is available, dispatch closest available helicopter.

KNOWN HAZARDS:

- Unknown

DUTY OFFICER CONSIDERATIONS:

- Determine if additional resources are necessary.
- Make standard notifications.
- Contact BLM Duty Officer within one hour if fire location is determined to be on BLM ownership
- Heavy Equipment use on BLM land must be approved by BLM
- All fires on BLM over 5 acres require a BLM Resource Advisor

M-200 MSO – HWY 200

AGENCY	UNIT	RESPONSE AREA #	RESPONSE AREA NAME	FDRA	CENTER POINT
DNRC	MSO	M-200	Highway 200	Lolo DNRC East	Johnsrud N46° 54.7' x W113° 40.3'

DISPATCH RESPONSE LEVEL	LOW	MODERATE	HIGH
FIRE RESPONSE	1 Engine	1 Engine	2 Engines Place DNRC Helicopter on Standby

RADIO GROUP	COMMAND	TAC	AIR-TO-AIR <i>Zone</i>	AIR-TO-GROUND <i>Protection</i>
Central Zone	DNRC Union	DNRC Tac <i>Mutual Aid: Red</i>	A/A 3: 126.0500	A/G Yellow: 151.2200

<p>SHARED BOUNDARY:</p> <ul style="list-style-type: none"> Missoula Ranger District (D3) Clearwater Unit (CLW) Missoula County (LG04)
<p>MDC NOTIFICATIONS:</p> <ul style="list-style-type: none"> Unit Duty Officer Determine if Missoula County 911 has dispatched county fire resources Notify responding resources of county fire resources status If smoke report is within 1 nautical mile of Missoula Ranger District (D3), notify D3 Duty Officer If smoke report is within 1 nautical mile of Clearwater Unit (CLW), notify CLW Duty Officer
<p>IF AIRCRAFT IS ORDERED:</p> <ul style="list-style-type: none"> Dispatch State helicopter first, if available. If no State helicopter is available, dispatch closest available helicopter
<p>KNOWN HAZARDS:</p> <ul style="list-style-type: none"> Unknown
<p>DUTY OFFICER CONSIDERATIONS:</p> <ul style="list-style-type: none"> Determine if additional resources are necessary Make standard notifications Contact BLM Duty Officer within one hour if fire location is determined to be on BLM ownership Heavy Equipment use on BLM land must be approved by BLM All fires on BLM over 5 acres require a BLM Resource Advisor

M-UGC MSO – Upper Gold Creek

AGENCY	UNIT	RESPONSE AREA #	RESPONSE AREA NAME	FDRA	CENTER POINT
DNRC	MSO	M-UGC	Upper Gold Creek	Lolo DNRC East	Cow Creek N46° 59.1' x W113° 40.6'

DISPATCH RESPONSE LEVEL	LOW	MODERATE	HIGH
FIRE RESPONSE	1 Engine	1 Engine	2 Engines

RADIO GROUP	COMMAND	TAC	AIR-TO-AIR Zone	AIR-TO-GROUND Protection
Central Zone	DNRC Union	DNRC Tac <i>Mutual Aid: Red</i>	A/A 3: 126.0500	A/G Yellow: 151.2200

SHARED BOUNDARY:

- Missoula Ranger District (D3)
- Clearwater Unit (CLW)
- Confederated Salish and Kootenai Tribes (CSKT - Flathead Agency)

MDC NOTIFICATIONS:

- Unit Duty Officer
- Determine if Missoula County 911 has dispatched county fire resources
- Notify responding resources of county fire resources status
- If smoke report is within 1 nautical mile of Missoula Ranger District (D3), notify D3 Duty Officer
- If smoke report is within 1 nautical mile of Clearwater Unit (CLW), notify CLW Duty Officer
- If smoke report is within 1 nautical mile of CSKT boundary, notify Ronan Dispatch

IF AIRCRAFT IS ORDERED:

- Dispatch State helicopter first, if available. If no State helicopter is available, dispatch closest available helicopter.

KNOWN HAZARDS:

- Unknown

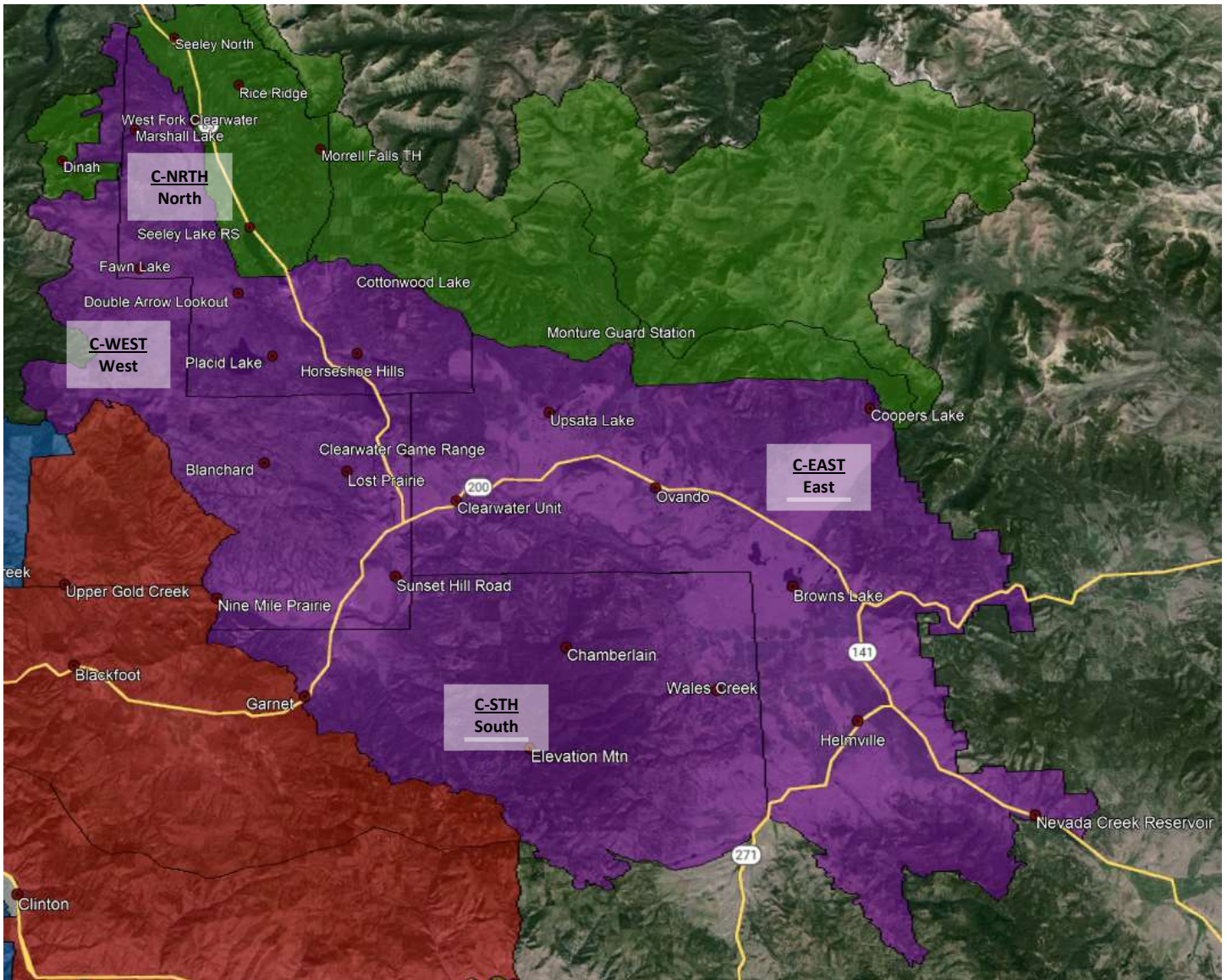
DUTY OFFICER CONSIDERATIONS:

- Determine if additional resources are necessary
- Make standard notifications
- Contact BLM Duty Officer within one hour if fire location is determined to be on BLM ownership
- Heavy Equipment use on BLM land must be approved by BLM
- All fires on BLM over 5 acres require a BLM Resource Advisor

THIS PAGE INTENTIONALLY LEFT BLANK

East Zone – Clearwater Unit (CLW)

DNRC Southwest Land Office



C-WEST CLW - West

AGENCY	UNIT	RESPONSE AREA #	RESPONSE AREA NAME	FDRA	CENTER POINT
DNRC	CLW	C-WEST	West	Lolo DNRC East	Boles Creek N47° 5.7' x W113° 35.1'

DISPATCH RESPONSE LEVEL	LOW	MODERATE	HIGH
FIRE RESPONSE	1 Engine	1 Engine	1 Engine Place DNRC Helicopter on Standby

RADIO GROUP	COMMAND	TAC	AIR-TO-AIR Zone	AIR-TO-GROUND Protection
East Zone	DNRC Morrell -OR- DNRC Union	DNRC Tac <i>Mutual Aid: Red</i>	A/A 3: 126.0500	A/G Yellow: 151.2200

SHARED BOUNDARY:

- Missoula Unit (MSO)
- Confederated Salish and Kootenai Tribes (CSKT - Flathead Agency)
- Kalispell Interagency Dispatch

MDC NOTIFICATIONS:

- Unit Duty Officer
- Determine if Missoula County 911 has dispatched county fire resources
- Notify responding resources of county fire resources status
- If smoke report is within 1 nautical mile of Missoula Unit (MSO), notify MSO Duty Officer
- If smoke report is within 1 nautical mile of CSKT boundary, notify Ronan Dispatch
- If smoke report is within 5 nautical miles of Kalispell Interagency Dispatch (KIC), notify KIC

IF AIRCRAFT IS ORDERED:

- Dispatch State helicopter first, if available. If no State helicopter is available, dispatch closest available helicopter.
- North end of the West Response Area has limited road access – consider helicopter to shuttle crews

KNOWN HAZARDS:

- Unknown

DUTY OFFICER CONSIDERATIONS:

- Determine if additional resources are necessary.
- Make standard notifications.
- Condon, MT is located within Missoula County, but it is located on the Flathead National Forest
- North end of the West Response Area has limited road access – consider helicopter to shuttle crews

C-STH CLW - South

AGENCY	UNIT	RESPONSE AREA #	RESPONSE AREA NAME	FDRA	CENTER POINT
DNRC	CLW	C-STH	South	Lolo DNRC East	Chamberlin Meadows N46° 53.4' x W113° 15.9'

DISPATCH RESPONSE LEVEL	LOW	MODERATE	HIGH
FIRE RESPONSE	1 Engine	1 Engine	1 Engine Place DNRC Helicopter on Standby

RADIO GROUP	COMMAND	TAC	AIR-TO-AIR Zone	AIR-TO-GROUND Protection
East Zone	DNRC Morrell, DNRC Ogden, -OR- DNRC Union	DNRC Tac <i>Mutual Aid: Red</i>	A/A 3: 126.0500	A/G Yellow: 151.2200

<p>SHARED BOUNDARY:</p> <ul style="list-style-type: none"> Missoula Unit (MSO) Dillon Interagency Dispatch
<p>MDC NOTIFICATIONS:</p> <ul style="list-style-type: none"> Unit Duty Officer Determine if Missoula, Powell, or Granite County 911 has dispatched county fire resources Notify responding resources of county fire resources status If smoke report is within 1 nautical mile of Missoula Unit (MSO), notify MSO Duty Officer If smoke report is within 1 nautical mile of Ninemile Ranger District (D4), notify D4 Duty Officer If smoke report is within 5 nautical miles of Dillon Interagency Dispatch (DDC) boundary, notify DDC
<p>IF AIRCRAFT IS ORDERED:</p> <ul style="list-style-type: none"> Dispatch State helicopter first, if available. If no State helicopter is available, dispatch closest available helicopter.
<p>KNOWN HAZARDS:</p> <ul style="list-style-type: none"> Unknown
<p>DUTY OFFICER CONSIDERATIONS:</p> <ul style="list-style-type: none"> Determine if additional resources are necessary. Contact BLM Duty Officer within one hour if fire location is determined to be on BLM ownership Heavy Equipment use on BLM land must be approved by BLM All fires on BLM over 5 acres require a BLM Resource Advisor

C-EAST CLW - East

AGENCY	UNIT	RESPONSE AREA #	RESPONSE AREA NAME	FDRA	CENTER POINT
DNRC	CLW	C-EAST	East	Lolo DNRC East	Ovando, MT N47° 1.2' x W113° 7.9'

DISPATCH RESPONSE LEVEL	LOW	MODERATE	HIGH
FIRE RESPONSE	1 Engine	2 Engines	2 Engines Place DNRC Helicopter on Standby

RADIO GROUP	COMMAND	TAC	AIR-TO-AIR Zone	AIR-TO-GROUND Protection
East Zone	DNRC Morrell -OR- DNRC Ogden	DNRC Tac <i>Mutual Aid: Red</i>	A/A 3: 126.0500	A/G Yellow: 151.2200

SHARED BOUNDARY:

- Seeley Ranger District (D6)
- Helena Interagency Dispatch
- Dillon Interagency Dispatch

MDC NOTIFICATIONS:

- Unit Duty Officer
- Determine if Missoula or Powell County 911 has dispatched county fire resources
- Notify responding resources of county fire resources status
- If smoke report is within 1 nautical mile of Seeley Lake Ranger District (D6), notify D6 Duty Officer
- If smoke report is within 5 nautical miles of Helena Interagency Dispatch (HDC), notify HDC
- If smoke report is within 5 nautical miles of Dillon Interagency Dispatch (DDC), notify DDC

IF AIRCRAFT IS ORDERED:

- Dispatch State helicopter first, if available. If no State helicopter is available, dispatch closest available helicopter.

KNOWN HAZARDS:

- Unknown

DUTY OFFICER CONSIDERATIONS:

- Determine if additional resources are necessary.
- Make standard notifications.
- Contact BLM Duty Officer if the fire is on BLM ground
- Heavy Equipment must be approved by BLM
- All fires on BLM over 5 acres require a BLM Resource Advisor

C-NRTH CLW - North

AGENCY	UNIT	RESPONSE AREA #	RESPONSE AREA NAME	FDRA	CENTER POINT
DNRC	CLW	C-NRTH	North	Lolo DNRC East	Seeley Lake Fire Department N47° 10.7 x W113° 29.1'

DISPATCH RESPONSE LEVEL	LOW	MODERATE	HIGH
FIRE RESPONSE	1 Engine	2 Engines	2 Engines Place DNRC Helicopter on Standby

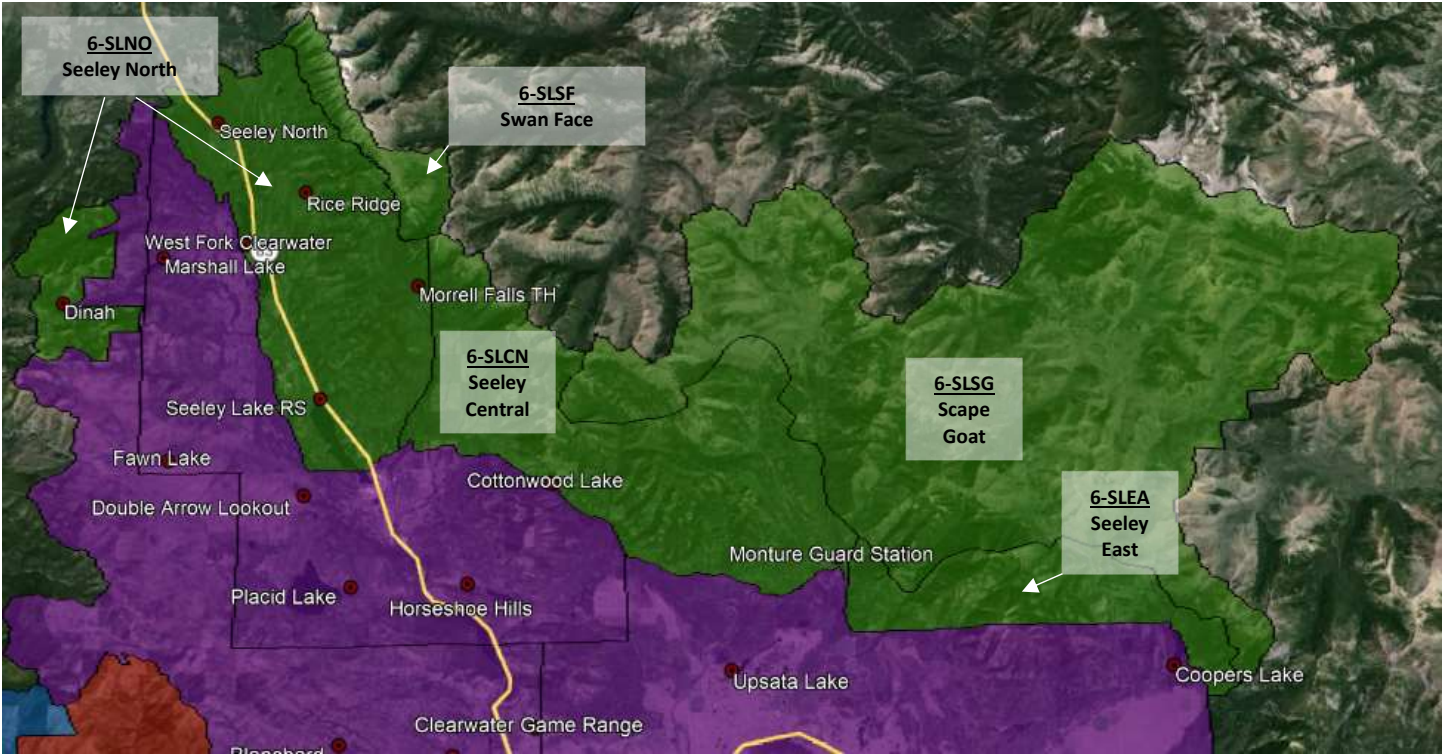
RADIO GROUP	COMMAND	TAC	AIR-TO-AIR <i>Zone</i>	AIR-TO-GROUND <i>Protection</i>
East Zone	DNRC Morrell	DNRC Tac <i>Mutual Aid: Red</i>	A/A 3: 126.0500	A/G Yellow: 151.2200

<p>SHARED BOUNDARY:</p> <ul style="list-style-type: none"> • Seeley Ranger District (D6) • Kalispell Interagency Dispatch
<p>MDC NOTIFICATIONS:</p> <ul style="list-style-type: none"> • Unit Duty Officer • Determine if Missoula County 911 has dispatched county fire resources • Notify responding resources of county fire resources status • If smoke report is within 1 nautical mile of Seeley Lake Ranger District (D6), notify D6 Duty Officer • If smoke report is within 5 nautical miles of Kalispell Interagency Dispatch (KIC) boundary, notify KIC
<p>IF AIRCRAFT IS ORDERED:</p> <ul style="list-style-type: none"> • Dispatch State helicopter first, if available. If no State helicopter is available, dispatch closest available helicopter.
<p>KNOWN HAZARDS:</p> <ul style="list-style-type: none"> • Substation 3 miles west of Placid Lake • High voltage secondary powerlines that feed from Placid Lake through the Jocko (Northwest Energy)
<p>DUTY OFFICER CONSIDERATIONS:</p> <ul style="list-style-type: none"> • Determine if additional resources are necessary. • Make standard notifications.

THIS PAGE INTENTIONALLY LEFT BLANK

East Zone – Seeley Ranger District (D6)

Lolo National Forest



6-SLNO D6 – Seeley North

AGENCY	UNIT	RESPONSE AREA #	RESPONSE AREA NAME	FDRA	CENTER POINT
USFS	D6	6-SLNO	Seeley North	Lolo DNRC East	Richmond Peak N47° 19.4' x W113° 30.0'

DISPATCH RESPONSE LEVEL	LOW	MODERATE	HIGH
FIRE RESPONSE	Notify Duty Officer	1 Engine	1 Engine 1 IA Module Prepare Kneeboard for Aircraft

RADIO GROUP	COMMAND	TAC	AIR-TO-AIR <i>Zone</i>	AIR-TO-GROUND <i>Protection</i>
East Zone	FS Richmond -OR- DNRC Morrell	LNF Tac 2	A/A 3: 126.0500	A/G 48: 167.8875

SHARED BOUNDARY:

- Clearwater Unit (CLW)
- Kalispell Interagency Dispatch

MDC NOTIFICATIONS:

- District Duty Officer
- Determine if Missoula County 911 has dispatched county fire resources
- Notify responding resources of county fire resources status
- If smoke report is within 1 nautical mile of DNRC Clearwater Unit (CLW), notify CLW Duty Officer
- If smoke report is within 5 nautical miles of Kalispell Interagency Dispatch (KIC) boundary, notify KIC

IF AIRCRAFT IS ORDERED:

- Numerous Lakes are available for Dip Sites

HELIBASE

- Seeley lake Airport, North End (State): N47° 11.202'x W113° 26.753'
- Fawn Creek helibase (FS): N47° 14.423'x W113° 33.715'

KNOWN HAZARDS:

- Recreationists
- Highway traffic
- Wildlife
- WUI corridor

DUTY OFFICER CONSIDERATIONS:

ACCESS

- Area is very inaccessible by vehicles.

MAJOR VALUES

- Major recreation opportunities associated with lakes, trails, and roads
- WUI

OTHER CONSIDERATIONS

- Determine if additional resources are necessary.
- Make standard notifications
- If it is a human start, order an INV. If fire is human caused with criminal potential, order a USFS LEO.

6-SLSF D6 – Swan Face

AGENCY	UNIT	RESPONSE AREA #	RESPONSE AREA NAME	FDRA	CENTER POINT
USFS	D6	6-SLSF	Swan Face	Lolo DNRC East	Fisher Peak N47° 21.9' x W113° 29.7'

DISPATCH RESPONSE LEVEL	LOW	MODERATE	HIGH
FIRE RESPONSE	Notify Duty Officer	Notify Duty Officer	Notify Duty Officer 1 Fixed Wing Recon Prepare Kneeboard for Aircraft

RADIO GROUP	COMMAND	TAC	AIR-TO-AIR <i>Zone</i>	AIR-TO-GROUND <i>Protection</i>
East Zone	FS Richmond -OR- DNRC Morrell	LNF TAC 2	A/A 3: 126.0500	A/G 48: 167.8875

<p>SHARED BOUNDARY:</p> <ul style="list-style-type: none"> • Kalispell Interagency Dispatch
<p>MDC NOTIFICATIONS:</p> <ul style="list-style-type: none"> • District Duty Officer • Determine if Missoula -OR- Powell County 911 has dispatched county fire resources • Notify responding resources of county fire resources status • If smoke report is within 5 nautical miles of Kalispell Interagency Dispatch (KIC) boundary, notify KIC
<p>IF AIRCRAFT IS ORDERED:</p> <ul style="list-style-type: none"> • Limited dipsites <p><u>HELIBASE</u></p> <ul style="list-style-type: none"> • Seeley lake Airport, North End (State): N47° 11.202'x W113° 26.753' • Fawn Creek helibase (FS): N47° 14.423'x W113° 33.715'
<p>KNOWN HAZARDS:</p> <ul style="list-style-type: none"> • Recreationists • Wildlife
<p>DUTY OFFICER CONSIDERATIONS:</p> <p><u>ACCESS</u></p> <ul style="list-style-type: none"> • Area is very inaccessible by vehicles. • Helicopters and Fixed wing are primary <p><u>MAJOR VALUES</u></p> <ul style="list-style-type: none"> • Major recreation opportunities associated with lakes, trails, and roads • Highly Visible to the public <p><u>OTHER CONSIDERATIONS</u></p> <ul style="list-style-type: none"> • Determine if additional resources are necessary. • Make standard notifications • If it is a human start, order an INV. If fire is human caused with criminal potential, order a USFS LEO.

6-SLCN D6 – Seeley Central

AGENCY	UNIT	RESPONSE AREA #	RESPONSE AREA NAME	FDRA	CENTER POINT
USFS	D6	6-SLCN	Seeley Central	Lolo DNRC East	Morrell Lookout N47° 11.4' x W113° 21.5'

DISPATCH RESPONSE LEVEL	LOW	MODERATE	HIGH
FIRE RESPONSE	Notify Duty Officer	1 Engine	1 Engine Prepare Kneeboard for Aircraft

RADIO GROUP	COMMAND	TAC	AIR-TO-AIR <i>Zone</i>	AIR-TO-GROUND <i>Protection</i>
East Zone	DNRC Morrell	LNF TAC 2	A/A 3: 126.0500	A/G 48: 167.8875

SHARED BOUNDARY:

- Clearwater Unit (CLW)
- Kalispell Interagency Dispatch

MDC NOTIFICATIONS:

- District Duty Officer
- Determine if Missoula County 911 has dispatched county fire resources
- Notify responding resources of county fire resources status
- If smoke report is within 1 nautical mile of DNRC Clearwater Unit (CLW), notify CLW Duty Officer
- If smoke report is within 5 nautical miles of Kalispell Interagency Dispatch (KIC) boundary, notify KIC

IF AIRCRAFT IS ORDERED:

DIPSITES

- Cottonwood Lakes (FS): N47° 9.925'x W113° 20.990'

HELIBASE

- Seeley lake Airport north end (State): N47° 11.202'x W113° 26.753'
- Monture Guard Station (FS): N47° 7.663'x W113° 9.156'
- Fawn Creek helibase (FS): N47° 14.423'x W113° 33.715'

KNOWN HAZARDS:

- Recreationists
- Wildlife
- High use traffic
- WUI corridor

DUTY OFFICER CONSIDERATIONS:

ACCESS

- Area is very inaccessible by vehicles.

MAJOR VALUES

- Major recreation opportunities associated with lakes, trails, and roads
- WUI

OTHER CONSIDERATIONS

- Determine if additional resources are necessary.
- Make standard notifications
- If it is a human start, order an INV. If fire is human caused with criminal potential, order a USFS LEO.

6-SLSG D6 – Scape Goat

AGENCY	UNIT	RESPONSE AREA #	RESPONSE AREA NAME	FDRA	CENTER POINT
USFS	D6	6-SLSG	Scape Goat	Lolo DNRC East	Lake Mountain N47° 10.1' x W112° 58.0'

DISPATCH RESPONSE LEVEL	LOW	MODERATE	HIGH
FIRE RESPONSE	Notify Duty Officer	Notify Duty Officer	Notify Duty Officer 1 Fixed or Rotor Recon Prepare Kneeboard for Aircraft

RADIO GROUP	COMMAND	TAC	AIR-TO-AIR <i>Zone</i>	AIR-TO-GROUND <i>Protection</i>
East Zone	FS Lake -OR- DNRC Morrell	LNF TAC 2	A/A 3: 126.0500	A/G 48: 167.8875

SHARED BOUNDARY:

- Kalispell Interagency Dispatch
- Great Fall Interagency Dispatch
- Helena Interagency Dispatch

MDC NOTIFICATIONS:

- District Duty Officer
- Determine if Missoula County 911 has dispatched county fire resources
- Notify responding resources of county fire resources status
- If smoke report is within 5 nautical miles of Kalispell Interagency Dispatch (KIC) boundary, notify KIC
- If smoke report is within 5 nautical miles of Great Falls Interagency Dispatch (GDC) boundary, notify GDC
- If smoke report is within 5 nautical miles of Helena Interagency Dispatch (HDC) boundary, notify HDC

IF AIRCRAFT IS ORDERED:

- Limited dipsites

HELIBASE

- Seeley lake Airport north end (State): N47° 11.202'x W113° 26.753'
- Monture Guard Station (FS): N47° 7.663'x W113° 9.156'
- North Fork Trail Head (FS): N47° 7.177'x W112° 57.951'

KNOWN HAZARDS:

- Recreationists - primarily stock and outfitters
- Wildlife

DUTY OFFICER CONSIDERATIONS:

ACCESS

- Helicopters and fixed wing are the primary

MAJOR VALUES

- Recreation opportunities associated with lakes, trails, and roads
- WUI
- Lake Mountain Repeater

OTHER CONSIDERATIONS

- Determine if additional resources are necessary.
- Make standard notifications
- If it is a human start, order an INVF. If fire is human caused with criminal potential, order a USFS LEO.

6-SLEA D6 – Seeley East

AGENCY	UNIT	RESPONSE AREA #	RESPONSE AREA NAME	FDRA	CENTER POINT
USFS	D6	6-SLEA	Seeley East	Lolo DNRC East	McCabe Point N47° 7.0' x W113° 3.7'

DISPATCH RESPONSE LEVEL	LOW	MODERATE	HIGH
FIRE RESPONSE	Notify Duty Officer	1 Engine	1 Engine 1 IA Module Prepare Kneeboard for Aircraft

RADIO GROUP	COMMAND	TAC	AIR-TO-AIR <i>Zone</i>	AIR-TO-GROUND <i>Protection</i>
East Zone	FS Lake -OR- DNRC Morrell	LNF TAC 2	A/A 3: 126.0500	A/G 48: 167.8875

SHARED BOUNDARY:

- Clearwater Unit (CLW)
- Helena Interagency Dispatch

MDC NOTIFICATIONS:

- District Duty Officer
- Determine if Missoula County 911 has dispatched county fire resources
- Notify responding resources of county fire resources status
- If smoke report is within 1 nautical mile of DNRC Clearwater Unit (CLW), notify CLW Duty Officer
- If smoke report is within 5 nautical miles of Kalispell Interagency Dispatch (KIC) boundary, notify KIC

IF AIRCRAFT IS ORDERED:

HELIBASE

- Seeley lake Airport north end (State): N47° 11.202'x W113° 26.753'
- Monture Guard Station (FS): N47° 7.663'x W113° 9.156'
- North Fork Trail Head (FS): N47° 7.177'x W112° 57.951'

KNOWN HAZARDS:

- Recreationists.
- High use traffic
- Wildlife
- WUI corridor

DUTY OFFICER CONSIDERATIONS:

ACCESS

- Area is mostly inaccessible by vehicles.

MAJOR VALUES

- Recreation opportunities associated with lakes, trails, and roads
- WUI

OTHER CONSIDERATIONS

- Determine if additional resources are necessary.
- Make standard notifications
- If it is a human start, order an INVF. If fire is human caused with criminal potential, order a USFS LEO.

APPENDICIES

THIS PAGE INTENTIONALLY LEFT BLANK

Appendix A – Terminology

Center Point: a center point is established within each Response Area and Dispatch Location. When a fire is reported within a Response Area, WildCAD uses this center point as a reference to determine the closest resource based on their current Dispatch Location, *unless* the resource identifies a more specific location.

Chase Truck: a group of firefighters rostered without an IC, traveling in a vehicle that is not an engine, water tender, etc. Chase Trucks will be named after each district engine, whether they are attached to the engine or not.

Discretionary Smoke Report: When any of the following smoke reports are received, the Run Card response will not be initiated. Instead, the appropriate Duty Officer will be contacted to determine the response.

- Federal Aviation Administration (FAA) Report.
- Abandoned Campfires, when clearly stated that it is still within the ring.
- Incidents local government fire departments have responded/are on scene and are requesting no additional resources where there is no Federal or State protection or ownership

Dispatch Location: pre-established geographic locations representative of the general area. Fire resources are expected to reference appropriate dispatch locations, followed by a specific or exact location, when calling into service to the area.

Engine: an engine type of 3, 4, 5, or 6 minimally staffed with one qualified Engine Boss, in addition to other wildland firefighters.

Initial Attack Module (IA Mod): a group of wildland firefighters rostered with an Incident Commander of any level. An IA Mod can travel with an engine and/or water tender but if the appropriately qualified individuals to operate the engine or water tender are not present, they will remain an IA Mod.

INVF: Wildland Fire Investigator – an NWCG Qualification

IRA: Inventoried Roadless Area. IRAs have difficult access to the area and are generally associated with timber sales and/or archeological sites.

Response Area: pre-established geographic boundaries encompassing protection areas with similar management objectives, land use, fire load, access, topography, fuel type and loading, etc. Can also be referred to as Dispatch Block or Run Card Block.

WUI: Wildland Urban Interface. A zone of transition where human development meets or intermingles with undeveloped wildland. Areas of WUI are at a greater risk of catastrophic wildfires.

Appendix B - Call Signs

Call signs, when used properly, can aide in the quick identification of level of experience and/or qualifications for dispatchers, incident commanders, management, etc. For Run Cards, and dispatching in general, to be efficient and successful, call signs must be used correctly.

Overhead Call Signs

When to use call-signs:

- An individual mobilizing *separately* from an engine, crew, module, or chase truck
“BAT 71 in service to . . .”
- When updating staffing of an engine, crew, module, or chase truck *via radio*
“E-641 is now staffed with Operator 41, AFEO 41, and BAT 41”
Note: individuals without a call sign with use their last name when updating staffing
- When released from an incident specific position (i.e., Incident Commander, Task Force, Division, etc.)

When not to use call-signs:

- An individual *attached* to an engine, crew, module, or chase truck
“CAPT 31 with MOD 3-C in service to. . .”
Note: if you are attached to the engine, crew, module, or chase truck, do not call in with your individual overhead call sign – call in with the engine, crew, module, or chase truck call sign
- An individual attached to an incident in which they have been assigned an incident specific position (i.e., Incident Commander, Task Force, Division, etc.)
“CAPT 51 on scene of the Orange Fire. I will be the Orange IC.”
“Orange IC, Missoula Dispatch. . .”, not CAPT 51

Other Call Signs

- Engines must have at least 2 personnel (3 for Type 3 engines), with one of those being an Engine Boss
- All groups of firefighters (2 or more) must call in as one of the following:
 - Initial Attack Modules (IA Mods) must have at least one Incident Commander (IC) of any level
 - Chase Trucks staffed separate of an Engine who do *not* have a qualified IC of any level
- Individuals without a call sign, traveling by themselves, will call in to MDC with their district followed by their last name.
“Missoula Dispatch, D7 Smith in service to. . .”

What’s my call sign?

View the spreadsheet here!



https://firenet365.sharepoint.com/:x:/s/DC_MTMDCEZUAT7hkPRpJroKKWrMZZvABFfW6TUNeRVVVOoOYeyOApw?e=NskKm0

Note: this is view only. To update the call signs, navigate to Box / Pinyon.

You must request access to the document.

If you need access, please call Missoula Dispatch at 406-829-7070, ext. 3.

The file is located under All Files > External Missoula Interagency Dispatch Center > Call Signs.

To view the full file, click on the the 3 dots (More Options), hover over “Open With”, and select “Excel Online”.

Do NOT open the document in the Microsoft Excel Application.

Appendix C – Resource Statusing

When a resource’s location and/or status changes, accuracy is pertinent to the success of Run Cards, and dispatching in general. Please use the following as a guideline when changing your status while in the field.

- If there is a large group all going to the same location or incident, each resource needs to call in separately as associated with the resource item they may be attached to, rather than having one call in all the resources heading out.
- When changing locations, please call in with the Dispatch Location first, followed with specific location information
“Show E-1165 in service to the Bonner Dispatch Location, working in the Olsen Mountain area for the afternoon”
- When enroute to Project Work, Prescribed Fire, Smoke Report, or Wildfire, please call in when you or your resource in responding and has arrived on scene

The table below is a breakdown of the status options used by Missoula Dispatch in WildCAD. These status options are color and text-style coded in WildCAD and provide a visual cue to the dispatchers of any resource’s status, as well as serving as the primary way of resource tracking.

Status	Definition	Available for Dispatch (Initial Attack)?
Available Quarters	Available, at home station	Yes
Available	Not at home station, but available elsewhere <i>Use in conjunction with Dispatch Locations</i>	Yes
In Service	<i>“Wheels rolling”</i> – enroute to a location not associated with an incident. <i>Use in conjunction with Dispatch Locations</i>	Yes
Committed	Attached to an incident. Not yet responding.	No*
Responding	Enroute to an incident	No*
On Scene	Arrived at incident	No*
Available at Incident	On scene of incident, but available for another assignment	Yes
Returning	Returning to quarters from incident -OR- leaving an incident to another non-incident location	Yes
Out of Service	Unstaffed or unavailable for a variety of reasons	No*

**Resources can be diverted for higher priority incidents if requested by Duty Officers*

Appendix D – Initial Attack Fire Size Up Form

When a resource is the first to arrive on scene of a wildland fire, all items in **red** are to be called in to dispatch immediately. This information will aid MDC in dispatching additional resources, as well as assisting in prioritizing incidents when multiple wildland fires may be present. Follow up with a full size as soon as resources are able.

INITIAL ATTACK FIRE SIZE UP

DISTRICT / UNIT: _____ INCIDENT NUMBER #: _____

CALL ITEMS IN RED TO DISPATCH IMMEDIATELY
FOLLOW UP WITH A FULL SIZE UP AS SOON AS RESOURCES ARE ABLE

Incident Name					
Incident Commander(s)					
Estimated Size (in acres)	INITIAL:		UPDATED:		
Cause of Fire					
Descriptive Location					
Initial Coordinates <small>Does not have to be Point of Origin</small>	LAT:		LONG:		
Updated Coordinates <small>Point of Origin</small>	LAT:		LONG:		
Protection <small>From plotted lat/long</small>			Ownership <small>From plotted lat/long</small>		
Management Options	<input type="checkbox"/> Full Suppression <input type="checkbox"/> Modified <input type="checkbox"/> Limited <input type="checkbox"/> Resource Benefit				
Control Problems	<input type="checkbox"/> No <input type="checkbox"/> Yes – specify: _____				
Additional Resource Needs					
Best Access				Flagging Color:	
Estimated Containment	DATE:		TIME:		
Estimated Control	DATE:		TIME:		
Fire Investigator Needed?	<input checked="" type="checkbox"/> No <input type="checkbox"/> Yes		INV or LEO On Scene? <input type="checkbox"/> No <input type="checkbox"/> Yes – Name: _____		
Values At Risk	<p style="text-align: center;"><i>Please provide as much detailed information as possible</i></p> Human Life: <input type="checkbox"/> Public <input type="checkbox"/> Responders <input type="checkbox"/> Medical <input type="checkbox"/> Other _____ Structures: <input type="checkbox"/> Primary _____ <input type="checkbox"/> Secondary _____ <input type="checkbox"/> Commercial _____ <input type="checkbox"/> Outbuildings _____ Property: <input type="checkbox"/> Livestock <input type="checkbox"/> Timber Sale(s) <input type="checkbox"/> T&E Species <input type="checkbox"/> Other _____ Community: <input type="checkbox"/> Town <input type="checkbox"/> Rec Site <input type="checkbox"/> Infrastructure <input type="checkbox"/> Cultural / Historical <input type="checkbox"/> Other _____ Timeframe and/or distance for VARs: _____				
Spread Potential / Rate of Spread:	<input type="checkbox"/> Low <input type="checkbox"/> Moderate <input type="checkbox"/> High <input type="checkbox"/> Extreme				
Fire Behavior	Smoldering Creeping	Running Spotting	Torching Crowning	Spotting Erratic	
Fuel Type	Burning in: Grass Grass-Shrub Brush Timber Slash Adjacent Fuels: Grass Grass-Shrub Brush Timber Slash				
Flame Length at the head of fire:	Slope at the Head of the Fire (Actual percent %):				
Position on Slope	Ridgetop Valley Bottom	Upper 1/3 Flat/Rolling	Middle 1/3 Canyon Bottom	Lower 1/3 Mesa/Plateau	Saddle
Aspect	North	NE	East	SE	South SW West NW Ridgetop
Weather Conditions	Clear Scattered Clouds		Building Cumulus T-Storms in Area		Lightning Overcast Intermittent Showers Heavy Showers
Wind Direction:	Wind Speed (MPH):		Elevation:		
Ground and Aerial Hazard(s):					
Dip Sites or Helispots:					

LCES IN PLACE? YES NO

Appendix E – Dispatch Fire Tone Out Script for Run Card Response

1. Group select all applicable frequencies
2. **ANNOUNCE** “All resources stand by for smoke report”
3. **PAUSE FOR 5 SECONDS**
4. **TRANSMIT** “SIREN” alert tone for 5 seconds
5. **PAUSE FOR 5 SECONDS**
6. For smoke reports:
 - a. **ANNOUNCE:** “ _____ please respond to incident # _____
[RESOURCES – PER RUN CARD RESPONSE]

for a smoke report in the _____.
[GEOGRAPHIC LOCATION]

Approximate Lat/Long [D dM format only – only to 2 decimal places]: _____ ° _____ . _____ ’ N by _____ ° _____ . _____ ’ W

This will be a _____ response to the _____ Response Area.
[DISPATCH RESPONSE LEVEL] [UNIT/DISTRICT NAME, FOLLOWED BY RESPONSE AREA NAME]

BREAK.”
- b. **PAUSE FOR 5 SECONDS**
 - a. **ANNOUNCE:** “recommended Command Channel is _____ . Tac Channel is _____ .”
Only announce if aircraft is being launched: “Air-to-Ground is _____ .

Reporting party is _____ .” *Do not provide public’s name or contact information over the radio!*
[PUBLIC, LOOKOUT TOWER, DETECTION FLIGHT, ETC.]

“Additional information (if any to provide): _____ .
[HAZARDS, ACCESS, DETECTION OVERHEAD, SMOKE COLOR, FIRE BEHAVIOR, ETC.]

STANDBY for check back.”
- c. **VERIFY** each resource dispatched has copied the transmission and provides a status update
 - i. “E-631, did you copy dispatch?” “E-631 copies. Show us enroute.”
- d. **FOLLOW UP** with phone call(s) to the appropriate Duty Officer(s)

Appendix F – Dispatch Fire Tone Out Script for Duty Officer Notification Response

Once a resource has called in to dispatch and is enroute to new smoke report:

1. **ANNOUNCE** “Missoula Dispatch copies, _____ enroute to smoke report in _____ area.
(RESOURCE) (GEOGRAPHIC LOCATION)

Please **STANDBY** for further incident information. **BREAK.**”

- a. **TRANSMIT** “TONE” alert tone for 3 seconds
- b. **PAUSE FOR 3 SECONDS**
- c. **ANNOUNCE:** “All resources responding to smoke report in _____ area, this is incident # _____
(GEOGRAPHIC LOCATION)

Approximate Lat/Long (D dM format only – only to 1 decimal place): _____ ° _____ . _____ ’ N by _____ ° _____ . _____ ’ W

This will be a _____ response to the _____ Response Area.
(DISPATCH RESPONSE LEVEL) (UNIT/DISTRICT NAME, FOLLOWED BY RESPONSE AREA NAME)

BREAK.”

- d. **PAUSE FOR 3 SECONDS**
- e. **ANNOUNCE:** “Recommended Command Channel is _____. Tac Channel is _____.”

Only announce if aircraft is being launched: “Air-to-Ground is _____.”

Reporting party is _____.” *Do not provide public’s name or contact information over the radio!*
(PUBLIC, LOOKOUT TOWER, DETECTION FLIGHT, ETC.)

“Additional information (if any to provide): _____.”
(HAZARDS, ACCESS, DETECTION OVERHEAD, SMOKE COLOR, FIRE BEHAVIOR, ETC.)

STANDBY for check back.”

- f. **VERIFY** each resource dispatched has copied the transmission and provides a status update
 - i. “E-631, did you copy dispatch?” “E-631 copies

